



Key Features

iEnna stands as the perfect lighting solution for various settings.

It adds a touch of style and pleasant illumination, enhancing environments with a modern and elegant design.

Architectural ceiling lighting range inspires architects, designers and system integrators with its exceptional quality, homogenous beam angles and remarkable creativity.

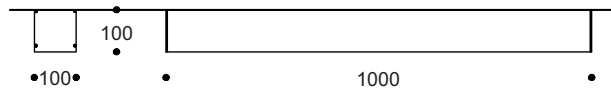
Designed to last in extremely harsh environments.



Key Data

| | |
|------------------------------|-----------------------------------------------------------------------------------------------------------------------------------------------------------------------------------------------------------------------------------------------------------------------------------------|
| LED Type | High efficiency LEDs, available in 2700K, 3000K, 4000K, 5000K, 6500K CCT tolerance within a 3-step MacAdams ellipse and LM80 compliant. Custom LED color combinations available. |
| Nominal Voltage | 220V-240V AC, 50/60Hz |
| Color Rendering Index | CRI ≥ 80 standard and CRI ≥ 90 on request. |
| Optics | 120° |
| Materials | Corrosion resistant double layer polyester powder coated paint finish extruded aluminium housing with stainless steel screws (A4 grade) and silicone gaskets. Power unit is built in. Available in anthracite gray as a standard finish or any desired RAL colour. BSITECH® LED Module. |
| Optional Coating | Marine grade. |
| Diffuser | High impact and heat resistant polycarbonate with UV protection. |
| LED Life Time | L90 - B10 > 100,000h |
| Operating Temperature | -40°C / +55°C |
| Power Factor | >0.95 |
| Control Systems | On - Off, 1-10V DIM, DALI Interface. |
| Protection Class | IP54 |
| Impact Resistance | IK08 |
| Insulation Class | Class I |
| Installation | Ceiling surface mounted. |
| Conformity | Complies with European Standards EN 60598 and CE certified. |

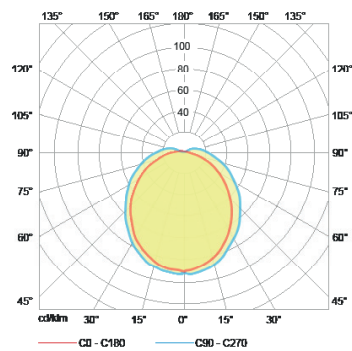
Technical Drawing



Information

| CODE | POWER CONSUMPTION | LUMEN OUTPUT (lm) 3000K / 4000K | COLOUR TEMPERATURE |
|--------|-------------------|------------------------------------|--------------------|
| IC6304 | 54W | 5940 / 6480 | 3000K / 4000K |

Light Distribution Curve



Diffused Beam