



## Key Features

iAxis Mini is a super compact surface mounted luminaire suitable for a wide range of wall washing, accent, surface grazing and indirect lighting applications in architectural, hospitality and retail environments, it has multiple customization options to illuminate interior walls, exterior facades and unique architectural details. Confirms vibration standards for bridge applications.

Designed to last in extremely harsh environments.

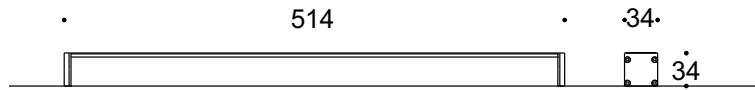
Monochrome, RGB & RGBW, DMX or DALI controllable, easy to install with the remote universal power supply and connect via combined power and data connectors.



## Key Data

<b>LED Type</b>	High efficiency LEDs, available in 2700K, 3000K, 4000K, 5000K, 6500 CCT tolerance within a 3-step MacAdams ellipse and LM80 compliant. Custom LED color combinations available.
<b>Nominal Voltage</b>	24V DC
<b>Color Rendering Index</b>	CRI ≥ 80 standard and CRI ≥ 90 on request.
<b>Optics</b>	Standard: 8° / 12° / 25° / 30° / 45° / 60° / 90° / 18°x38° / 10°x60° / 25°x50° Asymmetrical Linear Wallwash. Custom optics upon request.
<b>Materials</b>	Corrosion resistant extruded anodized aluminium housing (EN AW-6060) with stainless steel screws (A4 grade) and silicone rubber gaskets. Operates with a remote driver. End-to-end connection via plug connectors. Includes adjustable or fixed mounting brackets.
<b>Optional Coating</b>	Marine grade.
<b>Diffuser</b>	Thermal-shock resistant 4mm tempered glass.
<b>LED Life Time</b>	L90 - B10 > 100,000h
<b>Operating Temperature</b>	-40°C / +55°C
<b>Power Factor</b>	>0.95
<b>Control Systems</b>	1-10V DIM, DALI Interface, DMX / RDM (External)
<b>Protection Class</b>	IP66
<b>Impact Resistance</b>	IK08
<b>Insulation Class</b>	Class III
<b>Conformity</b>	Complies with European Standards EN 60598 and CE certified.

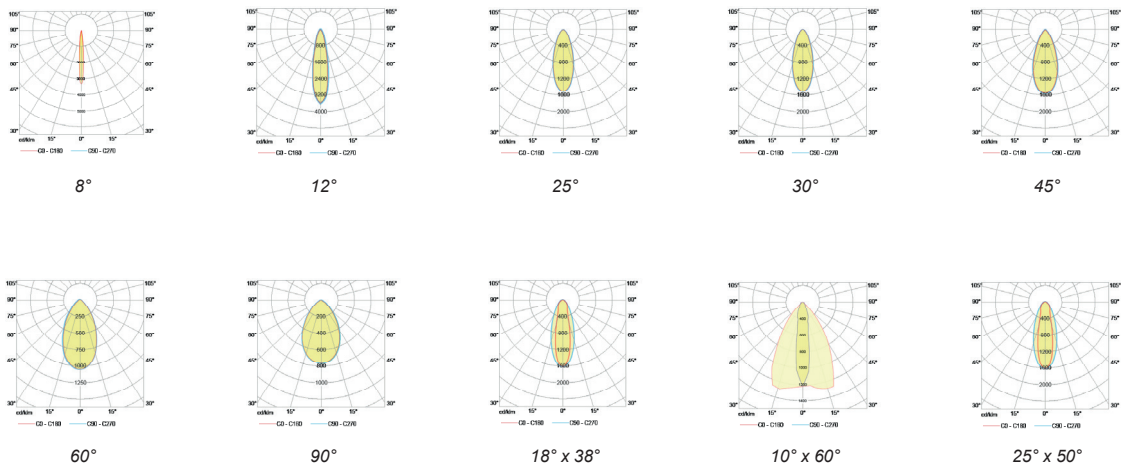
**Technical Drawing**



**Information**

CODE	LENGTH (mm)	PITCH (mm)	LED QTY	POWER CONSUMPTION 350mA	LUMEN OUTPUT (lm) 3000K / 4000K 350mA
AR9158412	514	41	12	12W	1620 / 1704

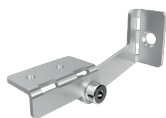
**Light Distribution Curve**



**Accessories**



**Homeycomb Louvre**  
Code: HC3001



**Adjustable Standard Bracket**  
Code: AB8001



**Adjustable Long Bracket**  
Code: AB8002



**T-Connector**  
Code: TC4001