

Key Features

Weatherproof and UV-resistant encapsulated drive-over and walkover narrow continuous LED line, drive-over 4000 Kg at max 40 Km/h. Suitable for architectural illumination of squares, paths, parks and gardens.

Designed to last in extremely harsh environments.

Frameless housing ensures seamless transition to light-emitting surface.

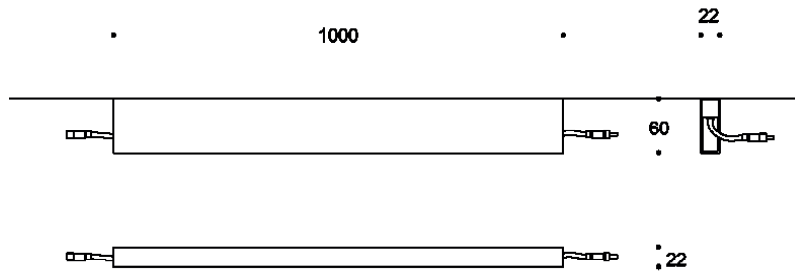
Monochrome or DALI controllable, easy to install with the remote universal power supply and connect via combined lowpower and data connectors.



Key Data

| | |
|------------------------------|--|
| LED Type | High efficiency LEDs, available in 2700K, 3000K, 4000K, 5000K, 6500K CCT tolerance within a 3-step MacAdams ellipse and LM80 compliant. |
| Nominal Voltage | 24V DC |
| Color Rendering Index | CRI ≥ 80 standard and CRI ≥ 90 on request. |
| Optics | 120° |
| Materials | Corrosion resistant stainless steel body (316) with stainless steel screws (A4 grade) and silicone rubber gaskets. Operates with a remote driver. Includes waterproof connectors and recessed box. BSILINEA® LED Module. |
| Optional Coating | Marine grade. |
| Diffuser | UV resistant encapsulated opal. |
| LED Life Time | L80 B10 70.000h Ta 25°C L80 B10 50.000h Ta 40°C |
| Operating Temperature | -40°C / +55°C |
| Power Factor | >0.95 |
| Control Systems | 1-10V DIM, DALI Interface (External). |
| Protection Class | IP67 |
| Impact Resistance | IK10 |
| Insulation Class | Class III |
| Installation | 20-30 cm drainage gravel for water evacuation. |
| Conformity | Complies with European Standards EN 60598 and CE certified. |

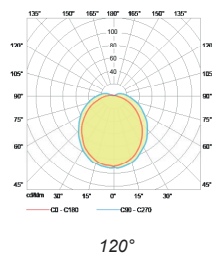
Technical Drawing



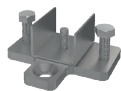
Information

| CODE | LENGTH (mm) | POWER CONSUMPTION | LUMEN OUTPUT (lm) 3000K / 4000K | COLOUR TEMPERATURE |
|--------|-------------|-------------------|---------------------------------|--------------------|
| AR8182 | 1000 | 10W | 750 / 850 | 3000K / 4000K |

Light Distribution Curve



Accessories



Floor Mounting
Code: FM1101



Side Cover
Code: SC1001



Transparent Connector
Code: TC1203



End Cap
Code: EC1001