

Key Features

iAxis Diffused Recessed linear recessed luminaire has a minimalist appearance emphasizes architectural details in a discreet way, offers a diffused and homogeneous light emission without shadows.

Drive-over 4000 Kg at max 40 Km/h.

The luminaire is available with frame and frameless versions.

Designed to last in extremely harsh environments.

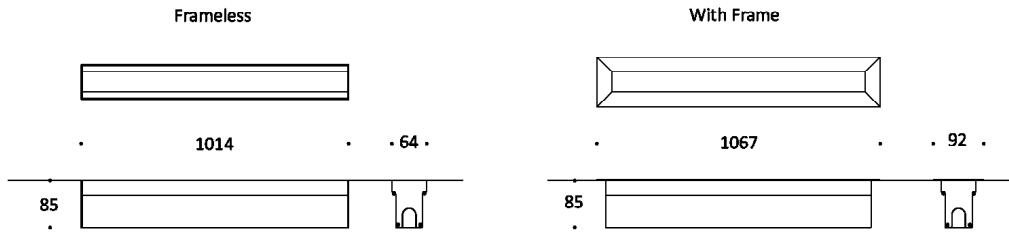
Monochrome or DALI controllable, easy to install with the integrated universal power supply and connect via combined power and data connectors.



Key Data

LED Type	High efficiency LEDs, available in 2700K, 3000K, 4000K, 5000K, 6500K CCT tolerance within a 3-step MacAdams ellipse and LM80 compliant. Custom LED color combinations available.
Nominal Voltage	220V-240V AC, 50/60Hz
Color Rendering Index	CRI ≥ 80 standard and CRI ≥ 90 on request.
Optics	Diffused Beam / 120°
Materials	Corrosion resistant extruded anodized aluminium housing (EN AW-6060) with stainless steel screws (A4 grade) and silicone rubber gaskets. Power unit is built in. End-to-end connection via power connectors. Includes recessing box.
Optional Coating	Marine grade.
Options	Aluminium frame with aluminium recessed box.
Diffuser	High impact and heat resistant opal diffuser.
LED Life Time	L80 B10 70.000h Ta 25°C L80 B10 50.000h Ta 40°C
Operating Temperature	-40°C / +55°C
Power Factor	>0.95
Control Systems	1-10V DIM, DALI Interface.
Protection Class	IP67
Impact Resistance	IK10
Load Rating	40 kN
Insulation Class	Class I
Installation	20-30 cm drainage gravel for water evacuation.
Conformity	Complies with European Standards EN 60598 and CE certified.

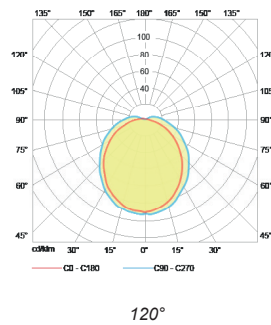
Technical Drawing



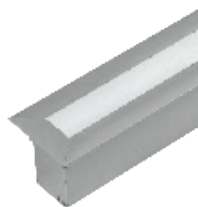
Information

CODE	LENGTH Frameless (mm)	LENGTH With Frame (mm)	POWER CONSUMPTION	LUMEN OUTPUT (lm) 3000K / 4000K	COLOUR TEMPERATURE
AR812601	1014	1067	18W	1620 / 1764	3000K / 4000K

Light Distribution Curve



Accessories



Aluminium Frame
Code: AF5001



IP68 Plug Power Connector Set
Code: CON1201