



Key Features

iAxis Mono Recessed luminaire is suitable for a wide range of wall washing, accent, surface grazing and indirect lighting applications in architectural, hospitality and retail environments, it has multiple customization options to illuminate interior walls, exterior facades and unique architectural details.

Drive-over 4000 Kg at max 40 Km/h. The luminaire is available with frame and frameless versions.

Designed to last in extremely harsh environments.

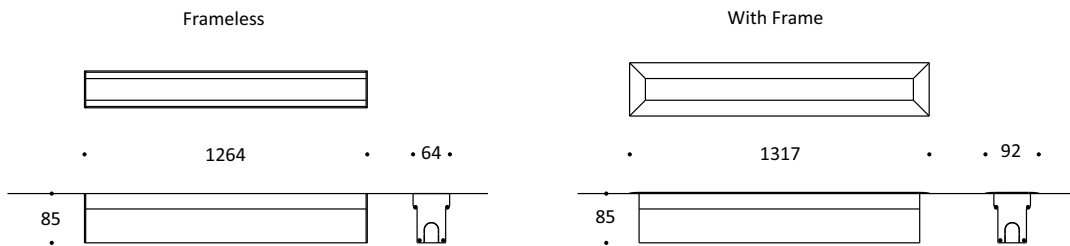
Monochrome or DALI controllable, easy to install with the integrated universal power supply and connect via combined power and data connectors.



Key Data

LED Type	High efficiency LEDs, available in 2700K, 3000K, 4000K, 5000K, 6500K CCT tolerance within a 3-step MacAdams ellipse and LM80 compliant. Custom LED color combinations available.
Nominal Voltage	220V-240V AC, 50/60Hz
Color Rendering Index	CRI ≥ 80 standard and CRI ≥ 90 on request.
Optics	Standard: 8° / 12° / 25° / 30° / 45° / 60° / 90° / 18°x38° / 10°x60° / 25°x50° Asymmetrical Linear Wallwash. Custom optics upon request.
Materials	Corrosion resistant extruded anodized aluminium housing (EN AW-6060) with stainless steel screws (A4 grade) and silicone rubber gaskets. Power unit is built in. End-to-end connection via power connectors. Includes recessing box.
Optional Coating	Marine grade.
Options	Aluminium frame with aluminium recessed box.
Diffuser	High impact and heat resistant polycarbonate with UV protection.
LED Life Time	L80 B10 70.000h Ta 25°C L80 B10 50.000h Ta 40°C
Operating Temperature	-40°C / +55°C
Power Factor	>0.95
Control Systems	1-10V DIM, DALI Interface.
Protection Class	IP67
Impact Resistance	IK10
Load Rating	40 kN
Insulation Class	Class I
Installation	20-30 cm drainage gravel for water evacuation.
Conformity	Complies with European Standards EN 60598 and CE certified.

Technical Drawing



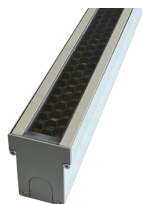
Information

CODE	LENGTH Frameless (mm)	LENGTH With Frame (mm)	PITCH (mm)	LED QTY	POWER CONSUMPTION 350mA	POWER CONSUMPTION 500mA	LUMEN OUTPUT (lm) 3000K / 4000K 350mA	LUMEN OUTPUT (lm) 3000K / 4000K 500mA
AR8122414	1264	1317	41	30	30W	45W	4050 / 4260	6075 / 6390

Light Distribution Curve



Accessories



Honeycomb Louvre
Code: HC3001



Aluminium Frame
Code: AF5001



**IP68 Plug Power
Connector Set**
Code: CON1201