

## Key Features

Weatherproof and UV-resistant encapsulated drive-over and walkover narrow continuous LED line, drive-over 4000 Kg at max 40 Km/h. Suitable for architectural illumination of squares, paths, parks and gardens.

Designed to last in extremely harsh environments.

Frameless housing ensures seamless transition to light-emitting surface.

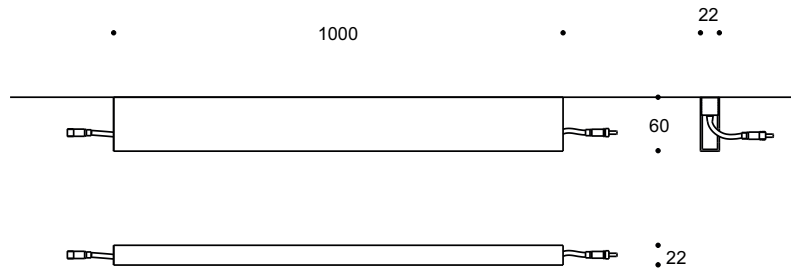
Monochrome or DALI controllable, easy to install with the remote universal power supply and connect via combined lowpower and data connectors.



## Key Data

<b>LED Type</b>	High efficiency LEDs, available in 2700K, 3000K, 4000K, 5000K, 6500K CCT tolerance within a 3-step MacAdams ellipse and LM80 compliant.
<b>Nominal Voltage</b>	24V DC
<b>Color Rendering Index</b>	CRI ≥ 80 standard and CRI ≥ 90 on request.
<b>Optics</b>	120°
<b>Materials</b>	Corrosion resistant extruded anodized aluminium housing (EN AW-6060) with stainless steel screws (A4 grade) and silicone rubber gaskets. Operates with a remote driver. Includes waterproof connectors and recessing box. BSILINEA® LED Module.
<b>Optional Coating</b>	Marine grade.
<b>Diffuser</b>	UV resistant encapsulated opal.
<b>LED Life Time</b>	L80 B10 70.000h Ta 25°C L80 B10 50.000h Ta 40°C
<b>Operating Temperature</b>	-40°C / +55°C
<b>Power Factor</b>	>0.95
<b>Control Systems</b>	1-10V DIM, DALI Interface (External).
<b>Protection Class</b>	IP67
<b>Impact Resistance</b>	IK10
<b>Insulation Class</b>	Class III
<b>Installation</b>	20-30 cm drainage gravel for water evacuation.
<b>Conformity</b>	Complies with European Standards EN 60598 and CE certified.

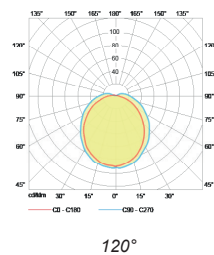
Technical Drawing



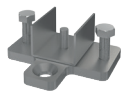
Information

CODE	LENGTH (mm)	POWER CONSUMPTION	LUMEN OUTPUT (lm) 3000K / 4000K	COLOUR TEMPERATURE
AR8083	1000	14W	1050 / 1190	3000K / 4000K

Light Distribution Curve



Accessories



**Floor Mounting**  
Code: FM1101



**Side Cover**  
Code: SC1001



**Transparent Connector**  
Code: TC1203



**End Cap**  
Code: EC1001