

Key Features

Weatherproof and UV-resistant encapsulated drive-over and walkover narrow continuous LED line, drive-over 4000 Kg at max 40 Km/h. Suitable for architectural illumination of squares, paths, parks and gardens.

Designed to last in extremely harsh environments.

Frameless housing ensures seamless transition to light-emitting surface.

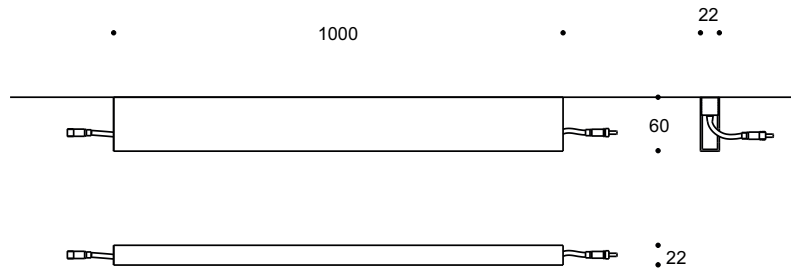
Monochrome or DALI controllable, easy to install with the remote universal power supply and connect via combined lowpower and data connectors.



Key Data

LED Type	High efficiency LEDs, available in 2700K, 3000K, 4000K, 5000K, 6500K CCT tolerance within a 3-step MacAdams ellipse and LM80 compliant.
Nominal Voltage	24V DC
Color Rendering Index	CRI ≥ 80 standard and CRI ≥ 90 on request.
Optics	120°
Materials	Corrosion resistant extruded anodized aluminium housing (EN AW-6060) with stainless steel screws (A4 grade) and silicone rubber gaskets. Operates with a remote driver. Includes waterproof connectors and recessing box. BSILINEA® LED Module.
Optional Coating	Marine grade.
Diffuser	UV resistant encapsulated opal.
LED Life Time	L80 B10 70.000h Ta 25°C L80 B10 50.000h Ta 40°C
Operating Temperature	-40°C / +55°C
Power Factor	>0.95
Control Systems	1-10V DIM, DALI Interface (External).
Protection Class	IP67
Impact Resistance	IK10
Insulation Class	Class III
Installation	20-30 cm drainage gravel for water evacuation.
Conformity	Complies with European Standards EN 60598 and CE certified.

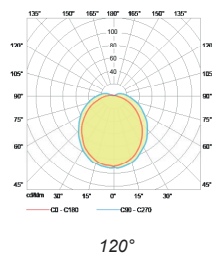
Technical Drawing



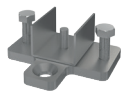
Information

CODE	LENGTH (mm)	POWER CONSUMPTION	LUMEN OUTPUT (lm) 3000K / 4000K	COLOUR TEMPERATURE
AR8082	1000	10W	750 / 850	3000K / 4000K

Light Distribution Curve



Accessories



Floor Mounting
Code: FM1101



Side Cover
Code: SC1001



Transparent Connector
Code: TC1203



End Cap
Code: EC1001