

## Key Features

iLevel is a dimmable encapsulated linear LED line, suited for installation in indoor and outdoor with a broad range of colours.

It is a colour mixing linear light source in a compact, IP rated, silicone sealed aluminium profile with mounting brackets.

Available in lengths to suit your application and provides a concealed, continuous linear glare and dot free illumination for discrete architectural details and accent lines.

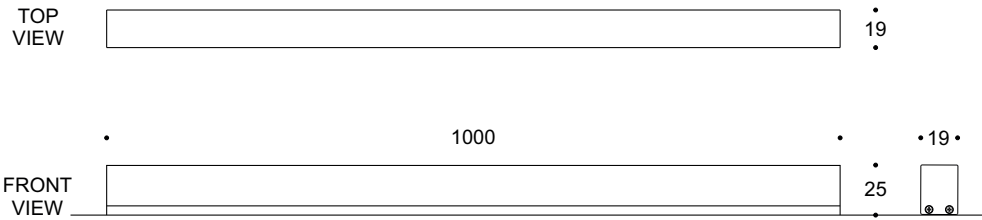
Designed to last in extremely harsh environments.



## Key Data

<b>LED Type</b>	High efficiency LEDs, available in 2700K, 3000K, 4000K, 5000K, 6500K CCT tolerance within a 3-step MacAdams ellipse and LM80 compliant.
<b>Nominal Voltage</b>	24V DC
<b>Color Rendering Index</b>	CRI ≥ 80 standard and CRI ≥ 90 on request.
<b>Optics</b>	120°
<b>Materials</b>	Corrosion resistant extruded anodized aluminium housing (EN AW-6060) with stainless steel screws (A4 grade) and silicone rubber gaskets. Operates with a remote driver. Includes waterproof connectors. BSILINEA® LED Module.
<b>Optional Coating</b>	Marine grade.
<b>Diffuser</b>	Shockproof PMMA UV Stabilised Diffuser.
<b>LED Life Time</b>	L90 - B10 > 100,000h
<b>Operating Temperature</b>	-40°C / +55°C
<b>Power Factor</b>	>0.95
<b>Control Systems</b>	1-10V DIM, DALI Interface.
<b>Protection Class</b>	IP67
<b>Impact Resistance</b>	IK08
<b>Insulation Class</b>	Class III
<b>Conformity</b>	Complies with European Standards EN 60598 and CE certified.

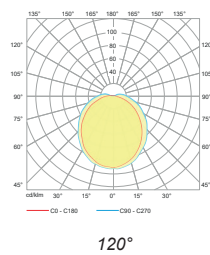
Technical Drawing



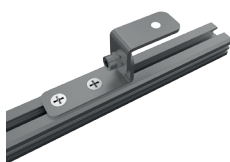
Information

CODE	LENGTH (mm)	POWER CONSUMPTION	LUMEN OUTPUT (lm) 3000K / 4000K
AR6075	1000	10 / 14 / 16 / 18W	1350 / 1530

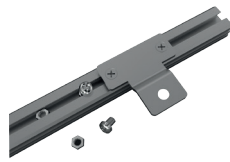
Light Distribution Curve



Accessories



**Adjustable Bracket**  
Code: AB6001



**Fixed Bracket**  
Code: FB7001



**Long Bracket**  
Code: FN8001



**Transparent Connector**  
Code: TC1203



**End Cap**  
Code: EC1001