



Key Features

iRinga is a dimmable encapsulated linear LED line, suited for installation in indoor and outdoor with a broad range of colours. It is a colour mixing linear light source in a compact, IP rated, silicone sealed aluminium profile with mounting brackets.

It is available in lengths to suit your application, continuous linear narrow beam illumination for discrete architectural details and accent lines.

Designed to last in extremely harsh environments.

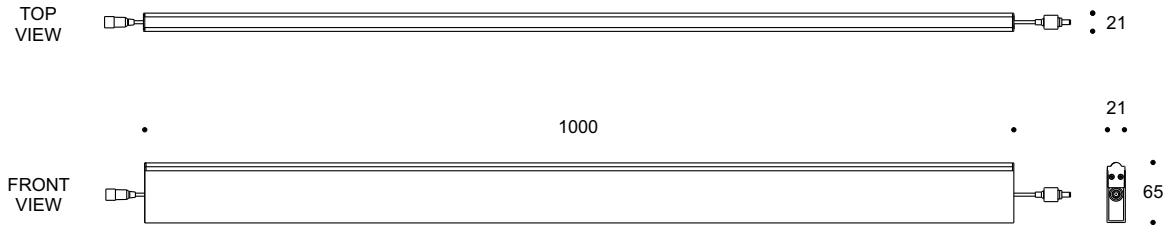
Monochrome, RGB DMX or DALI controllable, easy to install with the remote universal power supply and connect via combined low-power and data connectors.



Key Data

LED Type	High efficiency LEDs, available in 2700K, 3000K, 4000K, 5000K, 6500K CCT tolerance within a 3-step MacAdams ellipse and LM80 compliant.
Nominal Voltage	24V DC
Color Rendering Index	CRI ≥ 80 standard and CRI ≥ 90 on request.
Optics	10°
Materials	Corrosion resistant extruded anodized aluminium housing (EN AW-6060) with stainless steel screws (A4 grade) and silicone rubber gaskets. Operates with a remote driver. Includes waterproof connectors. BSILINEA® LED Module.
Optional Coating	Marine grade.
Diffuser	Shockproof PMMA UV Stabilised Diffuser.
LED Life Time	L90 - B10 > 100,000h
Operating Temperature	-40°C / +55°C
Power Factor	>0.95
Control Systems	1-10V DIM, DMX / RDM, DALI Interface.
Protection Class	IP67
Impact Resistance	IK08
Insulation Class	Class III
Conformity	Complies with European Standards EN 60598 and CE certified.

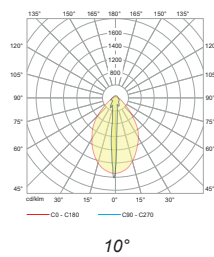
Technical Drawing



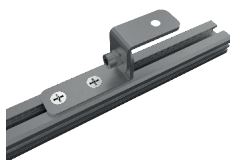
Information

CODE	LENGTH (mm)	POWER CONSUMPTION	LUMEN OUTPUT (lm) 3000K / 4000K	COLOUR TEMPERATURE
AR4404	1000	18W	1350 / 1530	3000K / 4000K

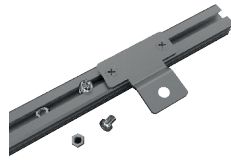
Light Distribution Curve



Accessories



Adjustable Bracket
Code: AB6001



Fixed Bracket
Code: FB7001



Long Bracket
Code: FN8001



Transparent Connector
Code: TC1203



End Cap
Code: EC1001