



Key Features

Minimal design bollard system suitable for multiple installation, brings a defined architectural addition to outdoor landscapes.

iOmni is equally used as light sources and refined architectural elements for urban decor. Constructed from high-quality stainless steel, the iOmni luminaire seamlessly integrates durability, aesthetics, and versatility.

Designed for various installations, iOmni illuminates pathways, gardens, residential areas, and more, making it a timeless and functional addition to any environment.

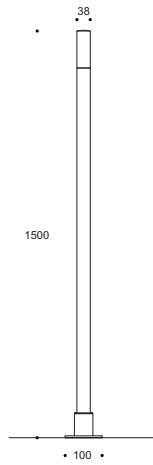
Designed to last in extremely harsh environments.



Key Data

LED Type	High efficiency LEDs, available in 2700K, 3000K, 4000K, 5000K, 6500K CCT tolerance within a 3-step MacAdams ellipse and LM80 compliant.
Nominal Voltage	220V-240V AC, 50/60Hz
Color Rendering Index	CRI ≥ 80 standard and CRI ≥ 90 on request.
Light Distribution	Rotational light distribution.
Materials	Corrosion resistant stainless steel housing AISI316 with stainless steel screws (A4 grade) and silicone gaskets. Power unit is built in.
Diffuser	Shockproof PMMA UV Stabilised Diffuser.
LED Life Time	L90 - B10 > 100,000h
Operating Temperature	-40°C / +55°C
Power Factor	>0.95
Control Systems	On-Off, 1-10V DIM, DALI Interface.
Protection Class	IP66
Impact Resistance	IK08
Insulation Class	Class I
Conformity	Complies with European Standards EN 60598 and CE certified.

Technical Drawing



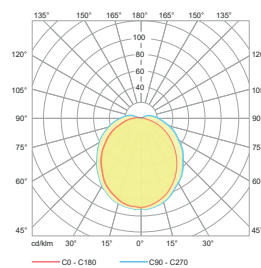
Information

PRODUCT	POWER CONSUMPTION	LUMEN OUTPUT (lm) 3000K / 4000K	COLOUR TEMPERATURE
LB67404	2W	136 / 156	3000K / 4000K

*Anchorage set included.

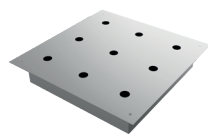
*Flange cover to be ordered separately.

Light Distribution Curve



Diffused Beam

Accessories



Base for group application



Spike