



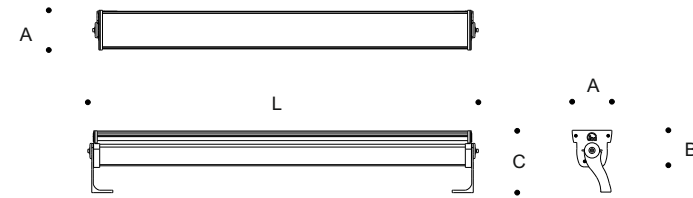
iAxis VS Surface is a robust surface-mounted luminaire for wall washing, grazing and accent lighting in architectural and urban environments.

Compact and High Performance

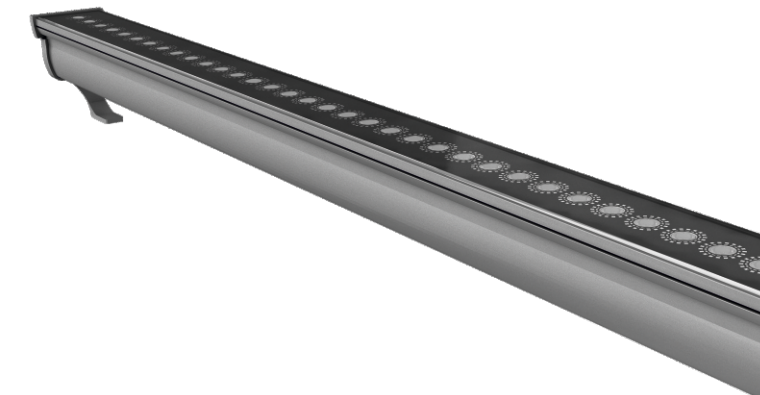
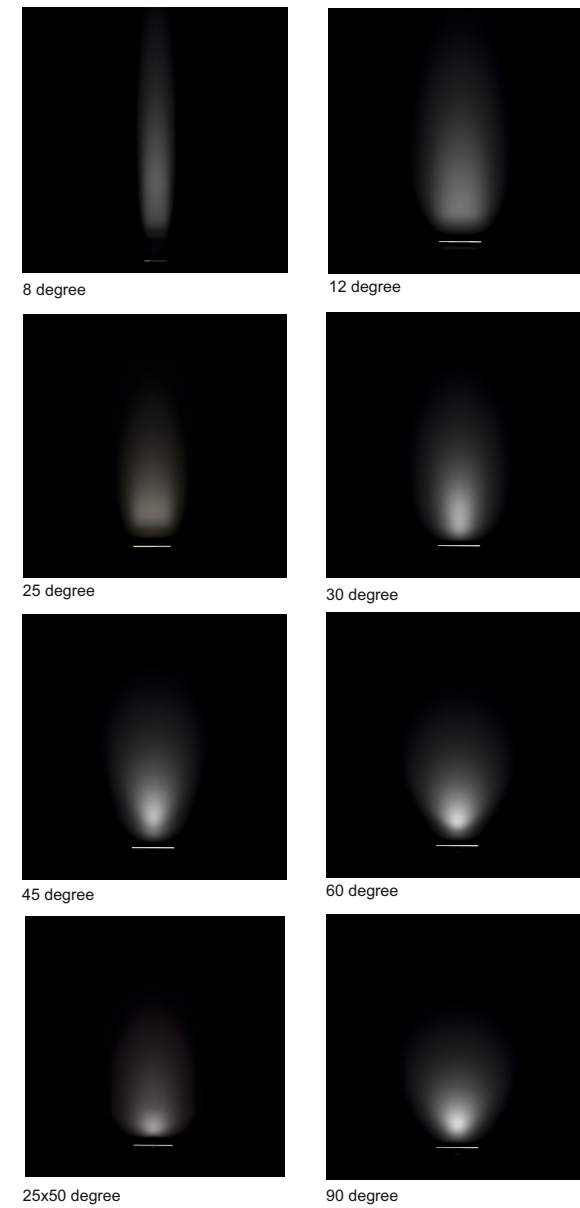
High-performance, compact linear luminaires designed for wall washing and wall grazing, offering outstanding flexibility. Advanced light sources and precision optics deliver a powerful, low-maintenance lighting solution.

Integrated Solution and Easy to Install

Plug and play built-in system with the fully integrated universal power supply unit. The watertight plug connector ensures easy, fast and secure installation. The robust luminaire fits seamlessly into the architecture.



iAxis VS Surface					
Codes	Power	A (mm)	B (mm)	C (mm)	L (mm)
AR9154651	12W	65	57	101	340
AR9154653	24W	65	57	101	640
AR9154654	36W	65	57	101	940
AR9154656	48W	65	57	101	1240



Technical Features

Corrosion resistant extruded anodized aluminium housing (EN AW-6060) with stainless steel screws (A4 grade) and silicone rubber gaskets. End- to-end connection via power connectors. Includes adjustable mounting brackets. Power unit is built in.

LED MacAdam Step 3

Nominal Voltage 220V-240V AC, 50/60Hz

Operating Temperature -40°C / +55°C

Control Systems 1-10V DIM, DALI Interface.

Protection Class IP67

Impact Resistance IK 08

Insulation Class I

Complies with EN60598-1 and relevant standards.

iAxis VS Surface



For detailed information about the iAxis VS Surface