

Floodlighting

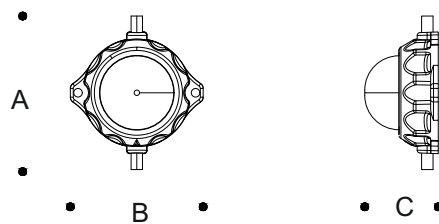
Compact LED module providing ultra-bright spot light output. BS Dot is the ideal solution for displaying video files, stunning visual effects and graphic patterns. The luminaire has an adjustable pixel pitch and is suitable for outdoor use. It is also available with an alternative opal dome that allows for maximum adaptability and design flexibility. Widely used in large-scale projects for the production of point-pixel solutions with direct view, such as media facade lighting and special lighting applications.

Highly Efficient and Flexible

Possible to create the appearance of facades or highlight details. Facades illuminated with subtle coloured or properly white light are important elements of architecture. This powerful outdoor LED spot for large venues enables long runtimes with variable pixel pitches for flexible designs.

Easy Set-Up and Innovative

Easy setup and long cable runs for clean installation. Flexible mounting system allows for customized solutions. Provides power and data transmission via input and output connectors. IP67 connectors are in push-lock structure and can be easily dismantled and assembled. There is no need to use extra junction-box via input and output.

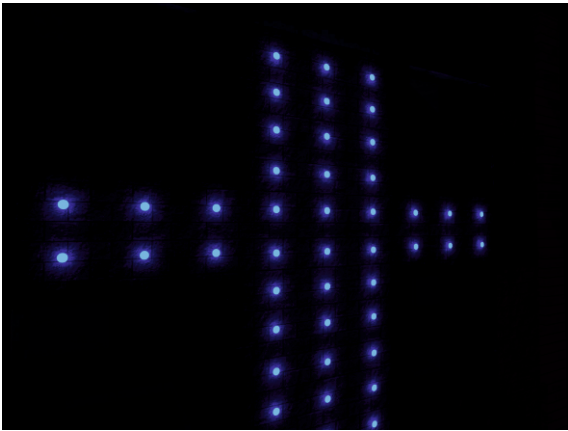


BS D					
Codes	Power	Colour Temperature	A (mm)	B (mm)	C (mm)
LB2792	1,5W-150W	3000K / 4000K	80	70	39
LB2793	1,5W-150W	3000K / 4000K	80	70	39
LB2794	15,5W-150W	3000K / 4000K	80	70	39
LB2872	2W-200W	3000K / 4000K	80	70	39

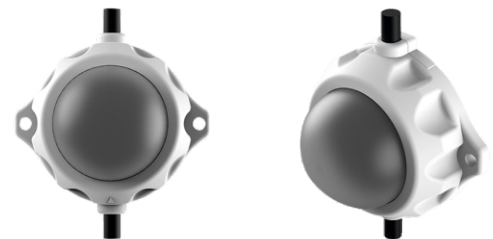
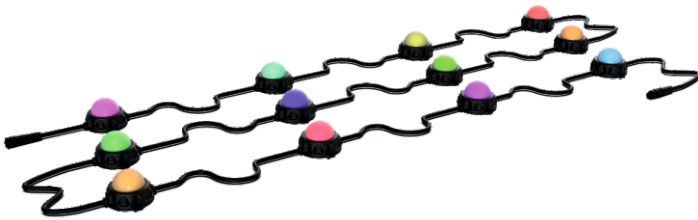
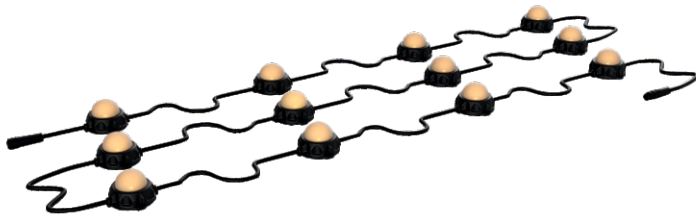
BS DOT
BS DOT



For detailed information about the BS DOT



Diffused Beam



Technical Features

High efficiency SMD LEDs, available in 2700K, 3000K, 4000K, 5000K, 6500K CCT tolerance within a 3-step MacAdams ellipse and LM80 compliant.

Material UV-Protected ABS Body / UV-Protected Polycarbonate Diffuser

Power Input 24V DC (Standard) / 48V DC (Optional)

Operating Temperature -30°C / +65°C

6 LED

Protection Class IP68

Impact Resistance IK10

Insulation Class III

Color Rendering Index CRI \geq 80 standard and CRI \geq 90 on request.

LED Life Time L90 - B50 > 60,000h

Complies with CE, RoHS