



## **PRODUCT FEATURES:**

iTubo Pole is a multi purpose urban lighting element suitable for squares, roads, pedestrian precincts, car parks and sports areas.

Floodlights are fully rotatable and adjustable.

Advanced thermal design with cutting-edge manufacturing process and materials.

Designed to last in extremely harsh environments

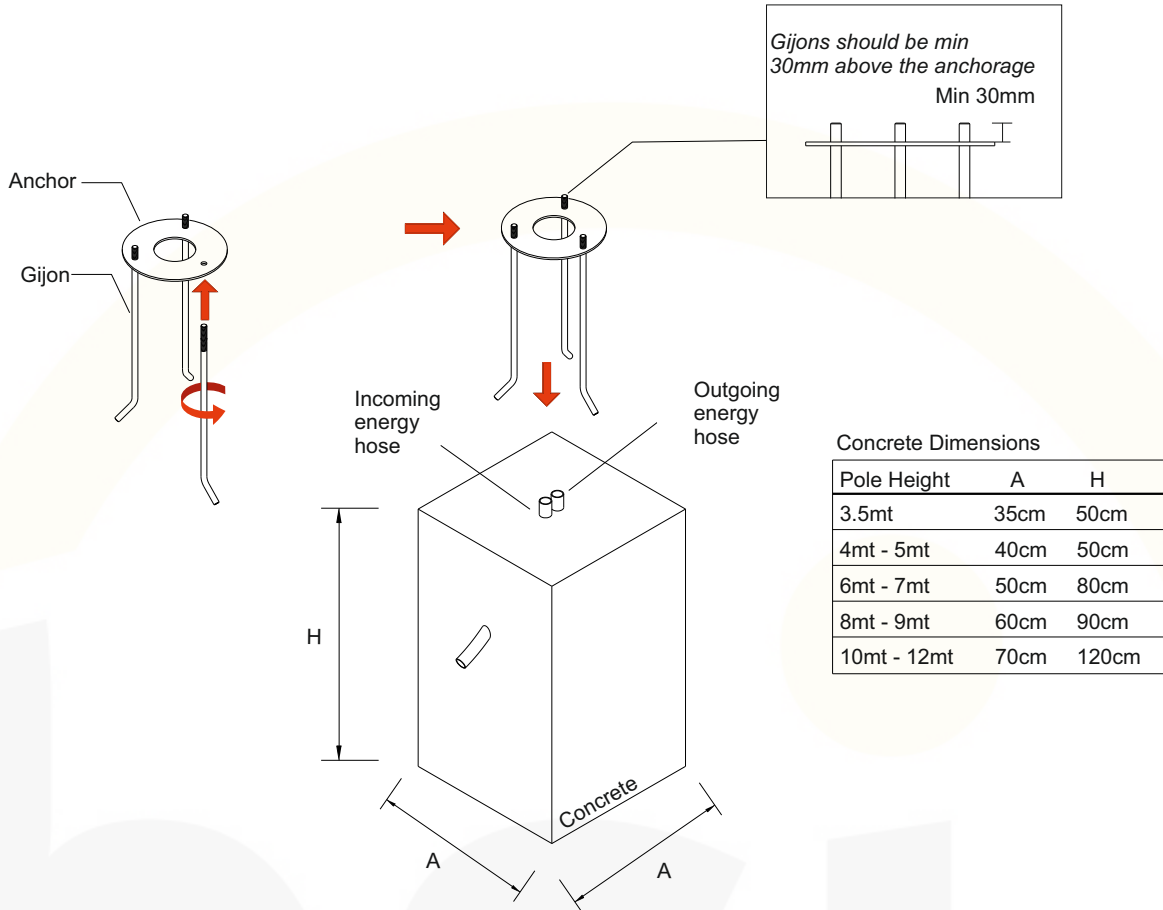
## **RECOMMENDATIONS FOR THE USER:**

- 1) Before the installation, make sure that there is no voltage.
- 2) Do not touch the fitting when it is working on / switched on
- 3) Do not look at the fitting directly or from a short distance.
- 4) Disconnect / switch off the fitting before changing the lamps
- 5) The safety of this fixture is guaranteed only if you comply with these instructions.

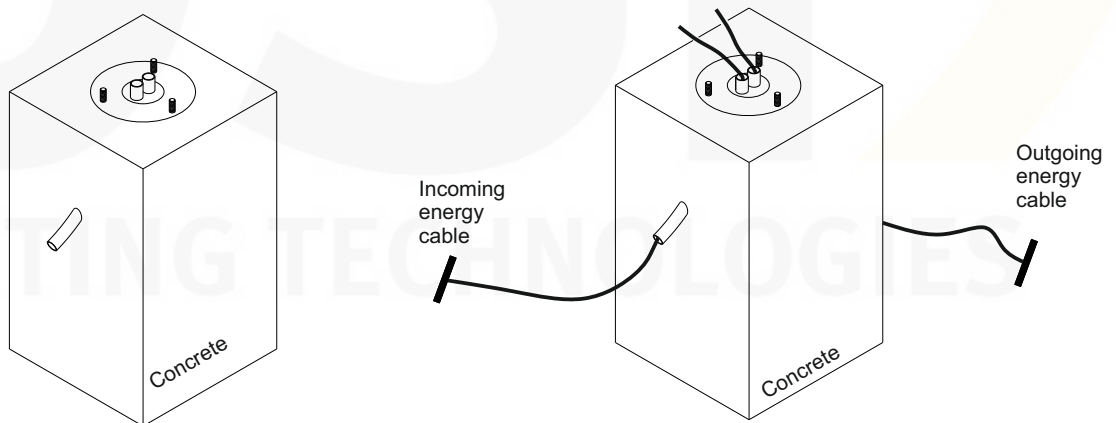
## **NOTES:**

- Technical amendments are reserved.
- CE – Conformity mark
- The manufacturer is then discharged from liability when damage is caused by improper use or installation.
- Clean luminaire regularly with solvent-free cleansers from dirt and deposits. Do not use high pressure cleaners.
- Cleaning agents containing hydrochloric acid and chlorides should never be used.

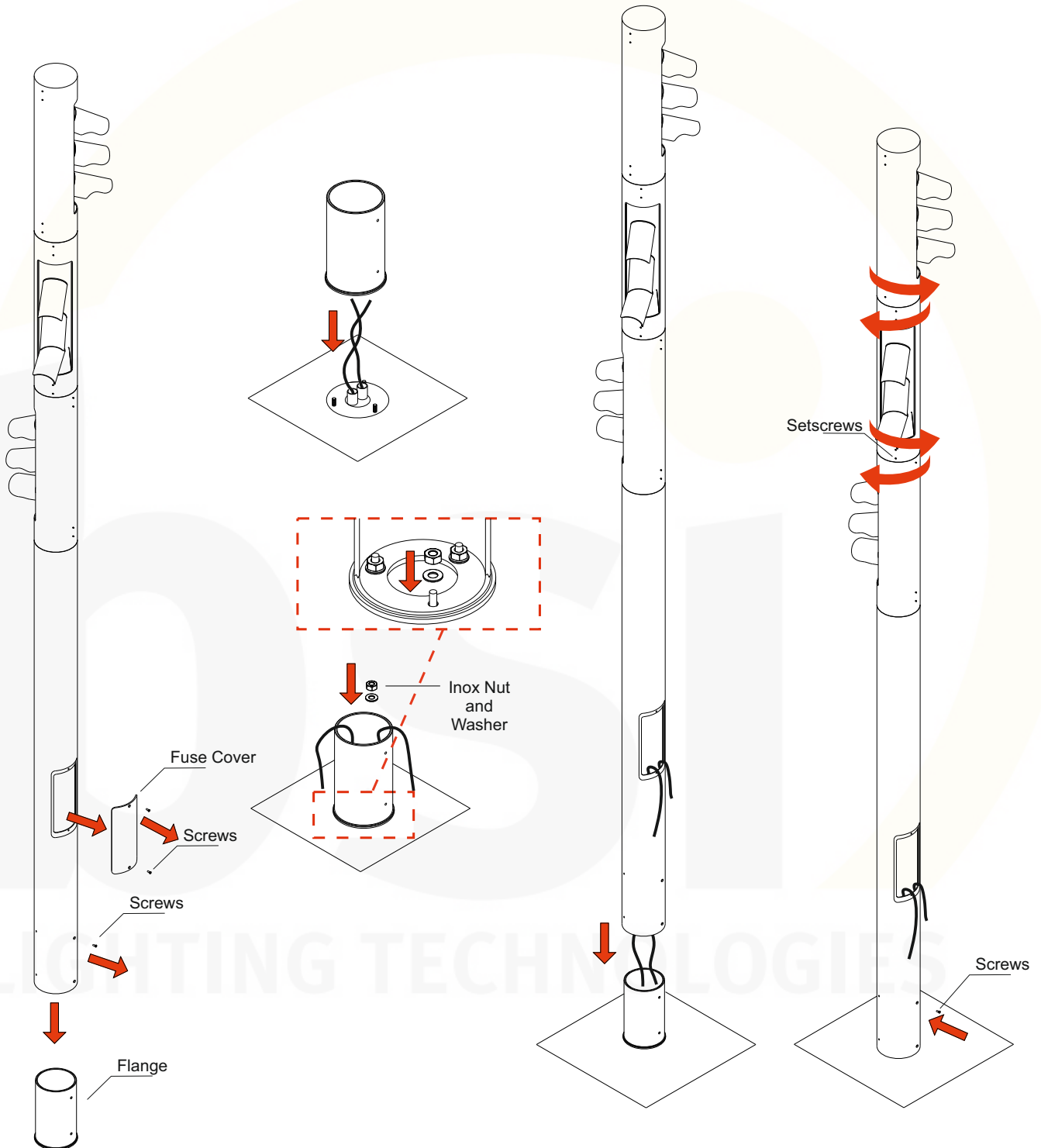
- 1) - The gijoons are screwed into the anchor.  
 - The prepared anchorage is embedded in the concrete.



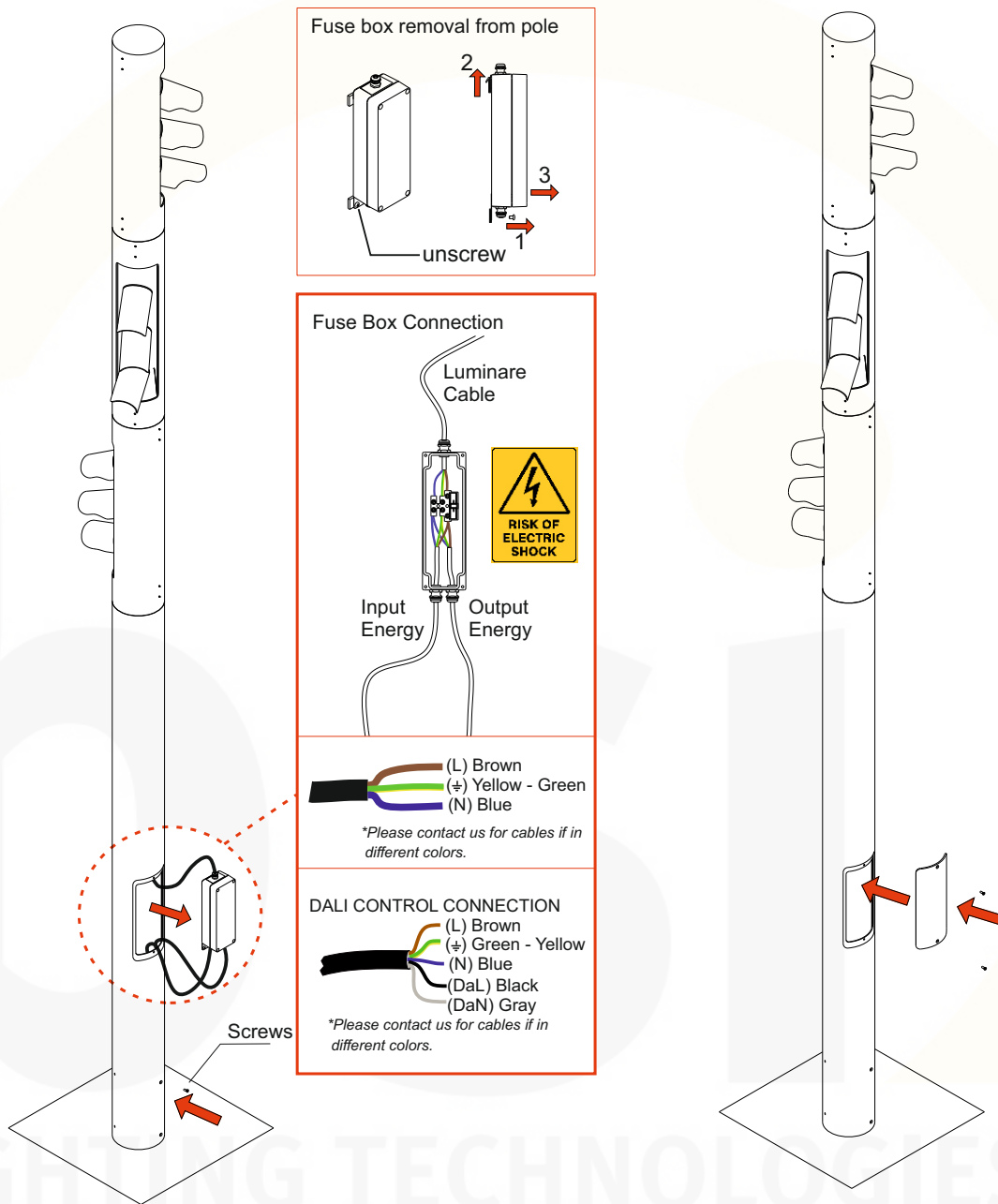
- 2) After the concrete has been dried, the electrical cables are pulled and the nuts are removed.



- 3) - Flange and fuse cover are removed from the pole.
- The flange is seated on the anchor and the inox nut-washer is tightened to the threads.
  - The incoming energy cable is passed through the pole and removed from the fuse cover.
  - The pole is placed on the flange.
  - Tighten the screws back into the pole.
  - The luminaires are turned to the desired position and the setscrews are tightened.



4) Electrical connection is done and the fuse cover is screwed back.



**Warning:**

- Do not cut-off or damage the cables of the products supplied as sockets. Otherwise, water may enter to the luminare through cable and damage the electronic parts inside.
- If you make the electrical connecton, except for IP.68 Terminal Block - IP.68 Plug connector - IP.68 socket; the connectons must be under IP protecton. Otherwise, water may enter to the luminare through cable and damage the electronic parts inside.
- The IP68 Connecting kits must be assembled in accordance with the installaton instructions. Otherwise, water may enter to the luminare through cable and damage the electronic parts inside.

**Out of Warranty Stuations:**

Product last output cable is not protected IP67-IP68.

Faulty electrical connecton.

Wrong IP68 socket-terminal block- plug connector connecton.  
(Wrong opening of the cable length, fauly tightening the screws etc.)

If the IP68 Connecting kits are under water.

LIGHTING TECHNOLOGIES