

Wall Mounted

Wall light with minimal, contemporary aesthetics blends into any architectural environment. Luminaires in various designs that set lighting accents on wall surfaces. Depending on the ambient brightness, they enable creative illumination of surfaces at night.

Architectural wall lighting range inspires architects, designers and system integrators with its exceptional quality, homogenous beam and remarkable creativity.

Clever and Versatile

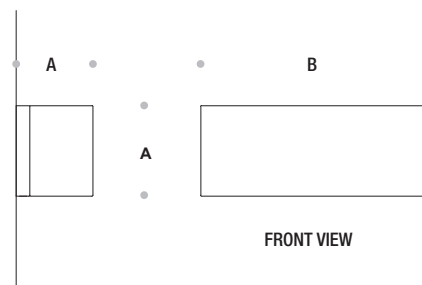
Technology and design merge in a wide range of applications, lighting effects and uses. This range of luminaires enhances the surrounding volumes through a clever balance of light, order and space.

Compact and high-performance luminaire with impressive versatility. Suitable for easy installation on walls.

Integrated Solution and Easy to Install

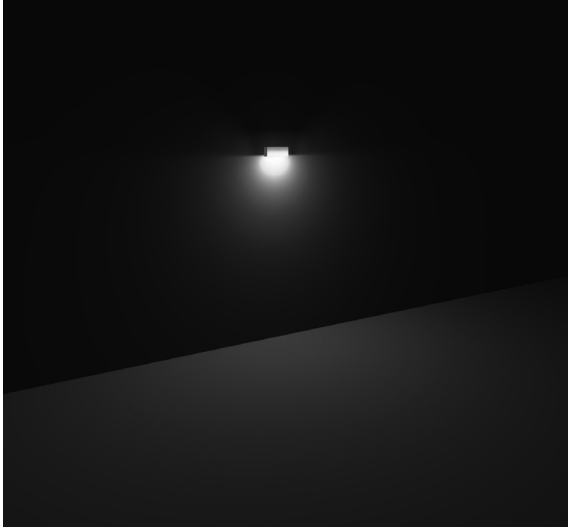
Plug and play built-in system with the fully integrated universal power supply unit.

The watertight plug connector ensures easy, fast and secure installation. The robust luminaire fits seamlessly into the architecture.



CODE	POWER CONSUMPTION	COLOUR TEMPERATURE	A(mm)	B(mm)
WA4520	12W	3000K / 4000K	100	250





Diffused beam



Available in Black colour



Available in Corten colour



Available in Silver colour



Technical Features

Corrosion resistant double layer polyester powder coated paint finish aluminium housing (EN AW-6060) with stainless steel screws (A4 grade) and silicone gaskets. Power unit is built in. Available in anthracite gray as a standard finish or any desired RAL colour.

LED MacAdam Step 3

Nominal Voltage 220V-240V AC, 50/60Hz

Operating Temperature -40°C / +55°C

Control Systems On - Off

Protection Class IP66

Impact Resistance IK08

Insulation Class I

Complies with EN60598 and relevant standards.