



The use of a cubic luminaire in combination with special lenses creates narrow and perfectly defined light lines on the walls.

Architectural wall lighting range inspires architects, designers and system integrators with its exceptional quality, unique light effects and remarkable creativity.

Compact and High Performance

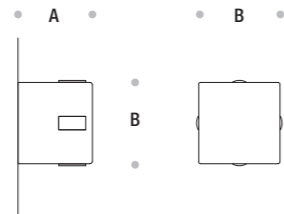
Defining architectural spaces with precision optics. Innovative light sources and precise narrow lenses combine to form a high impact and low maintenance lighting system.

iTrace is a compact and high performance luminaire with impressive versatility. Suitable for easy installation on walls.

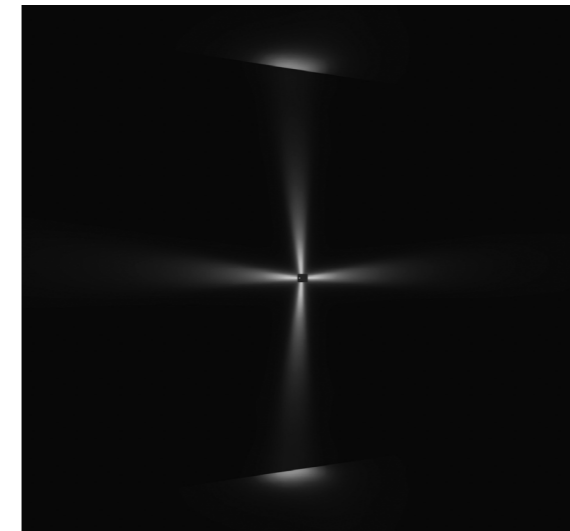
Integrated Solution and Easy to Install

Plug and play built-in system with the fully integrated universal power supply unit.

The watertight plug connector ensures easy, fast and secure installation. The robust luminaire fits seamlessly into the architecture.



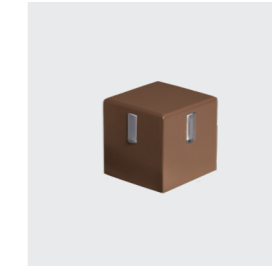
iTrace				
Codes	Power	Colour Temperature	A (mm)	B (mm)
WA4420	4 x 3W	3000K / 4000K	135	120



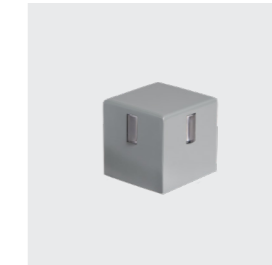
Narrow beam



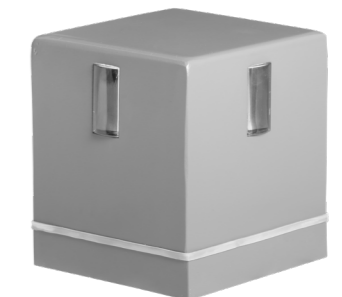
Available in Black colour



Available in Corten colour



Available in Silver colour



Technical Features

Corrosion resistant double layer polyester powder coated paint finish die cast aluminium housing with stainless steel screws (A4 grade) and silicone gaskets. Power unit is built in. Available in anthracite gray as a standard finish or any desired RAL colour.

LED MacAdam Step 3

Nominal Voltage 220V-240V AC, 50/60Hz

Operating Temperature -40°C / +55°C

Control Systems On - Off

Protection Class IP66

Impact Resistance IK10

Insulation Class I

Complies with EN60598 and relevant standards.

