

Ceiling

The iTetta S series is a range of aluminium solid volumes presented in different combinations. The defining characteristic of this lighting range is its timeless formal purity, which makes it ideal for use in both living and contract spaces.

Architectural ceiling lighting range inspires architects, designers and system integrators with its exceptional quality, a variety of beam angles and remarkable creativity.

Innovative and High Performance

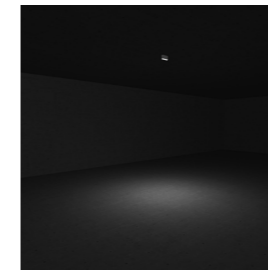
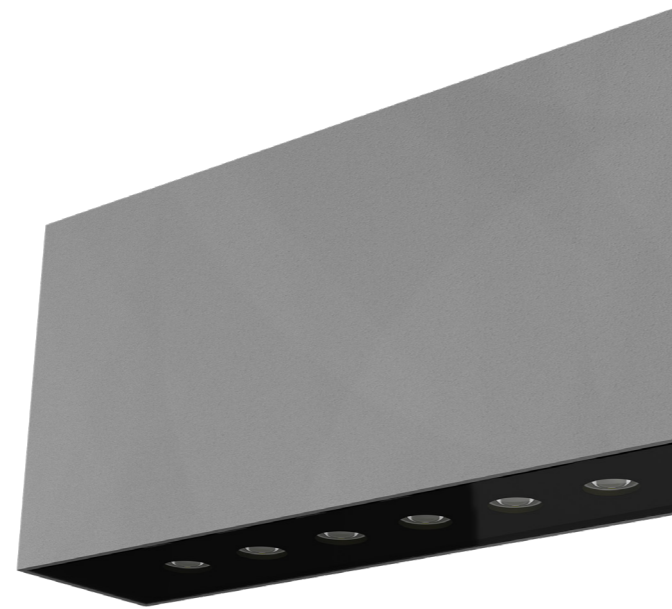
Defining architectural spaces with precision optics. Innovative light sources and precise optical systems combine to form a high impact and low maintenance lighting system.

iTetta S is a compact and high performance luminaire with impressive versatility. Suitable for easy installation on ceilings.

Integrated Solution and Easy to Install

Plug and play built-in system with the fully integrated universal power supply unit.

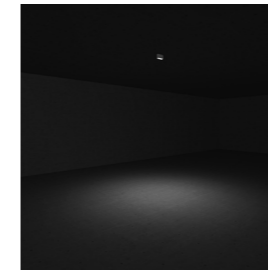
The watertight plug connector ensures easy, fast and secure installation. The robust luminaire fits seamlessly into the architecture.



30 degree



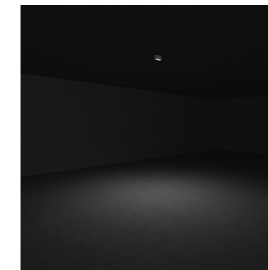
Available in Black colour



45 degree



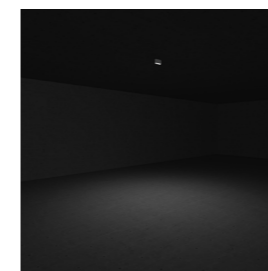
Available in Corten colour



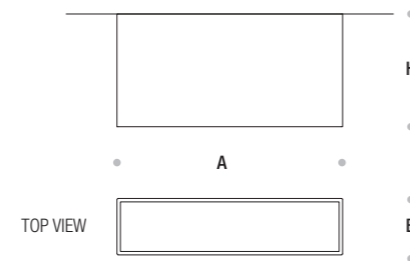
60 degree



Available in Silver colour



90 degree



iTetta S					
Codes	Power	Colour Temperature	A (mm)	B (mm)	H (mm)
IC6421	9W	3000K / 4000K	200	50	100

Technical Features

Corrosion resistant double layer polyester powder coated paint finish die cast aluminium housing with stainless steel screws (A4 grade) and silicone gaskets. Power unit is built in. Available in anthracite gray as standard finish or any desired RAL colour.

LED MacAdam Step 3

Nominal Voltage 220V-240V AC, 50/60Hz

Operating Temperature -40°C / +55°C

Control Systems On-Off, 1-10V DIM, DALI Interface

Protection Class IP65

Impact Resistance IK09

Insulation Class I

Complies with EN60598 and relevant standards.



For detailed information about the iTetta S