

Diffused Beam

iObzor R series is a versatile solution for all architectural areas. New generation recessed floor mounting luminaire features innovative technologies and design solutions that guarantee very low temperatures on the outer surface of the luminaire.

Architectural in-ground die-cast aluminium LED recessed range inspires architects, designers and system integrators with its exceptional quality, homogeneous beam and remarkable creativity.

Compact and High Performance

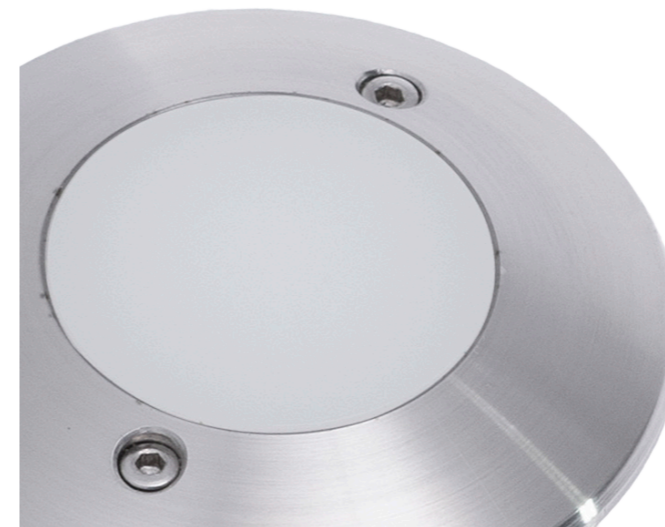
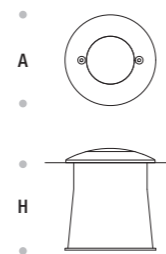
Innovative light sources with low recessing depth combine to form a high impact and low maintenance product.

iObzor R is a compact and high performance luminaire with impressive versatility. Suitable for easy installation on walkways, promenades and squares.

Integrated Solution and Easy to Install

Plug and play built-in system with the fully integrated universal power supply unit.

The watertight plug connector ensures easy, fast and secure installation. The robust luminaire fits seamlessly into the architecture.



Technical Features

Corrosion resistant double layer polyester powder coated paint finish die cast aluminium housing with stainless steel screws (A4 grade) and silicone gaskets. Power unit is built in. Includes recessing box and stainless steel frame.

LED MacAdam Step 3

Nominal Voltage 220V-240V AC, 50/60Hz

Operating Temperature -40°C / +55°C

Control Systems On - Off

Protection Class IP67

Impact Resistance IK10

Insulation Class I

Complies with EN60598 and relevant standards.

iObzor R				
Codes	Power	Colour Temperature	A (mm)	B (mm)
AC8058	Max 6W	3000K / 4000K	93	95



For detailed information about the iObzor R