



Directed downwards light

iFlap series is a versatile solution for all architectural areas. Offers a long-lasting illumination for recessed wall lighting. LED power source concealed in the light is perfect to illuminate the interior as well the exterior staircases for all corporate and personal spaces.

Architectural wall recessed die-cast aluminium LED recessed range inspires architects, designers and system integrators with its exceptional quality, homogeneous beam and remarkable creativity.

High Impact and Versatile

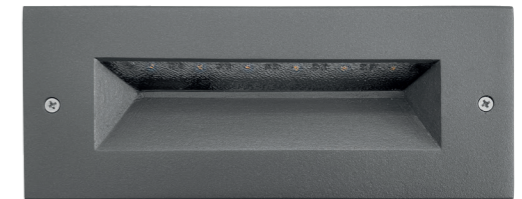
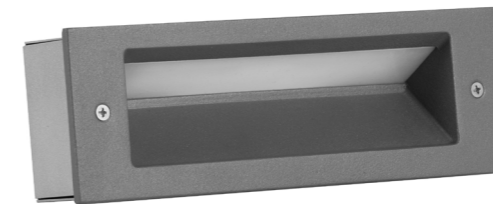
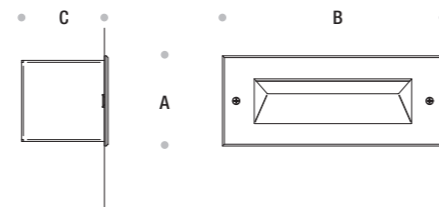
Innovative light sources with low recessing depth combine to form a high impact and low maintenance product.

iFlap is a compact and high performance luminaire with impressive versatility. Suitable for easy installation on walls.

Integrated Solution and Easy to Install

Plug and play built-in system with the fully integrated universal power supply unit.

The watertight plug connector ensures easy, fast and secure installation. The robust luminaire fits seamlessly into the architecture.



Technical Features

Corrosion resistant double layer polyester powder coated paint finish die cast aluminium housing with stainless steel screws (A4 grade) and silicone gaskets. Power unit is built in. Available in anthracite gray as a standard finish or any desired RAL colour. Includes recessing box.

LED MacAdam Step 3

Nominal Voltage 220V-240V AC, 50/60Hz

Operating Temperature -40°C / +55°C

Control Systems DALI Interface

Protection Class IP66

Impact Resistance IK09

Insulation Class I

Complies with EN60598 and relevant standards.

iFlap					
Codes	Power	Colour Temperature	A (mm)	B (mm)	C (mm)
AC5091	12W	3000K / 4000K	98	240	94

iFlap



For detailed information about the iFlap