



### **PRODUCT FEATURES:**

Recessed luminaire for outdoor installation in ground.  
Ambient illumination with a special visual effect.  
Designed to last in extremely harsh environments.

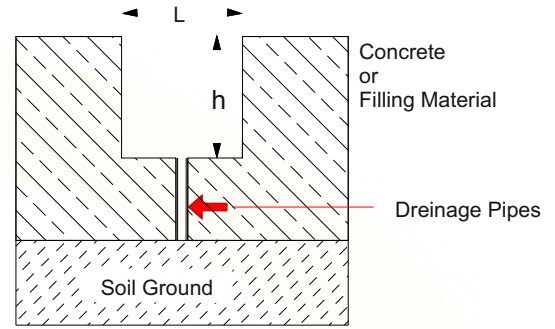
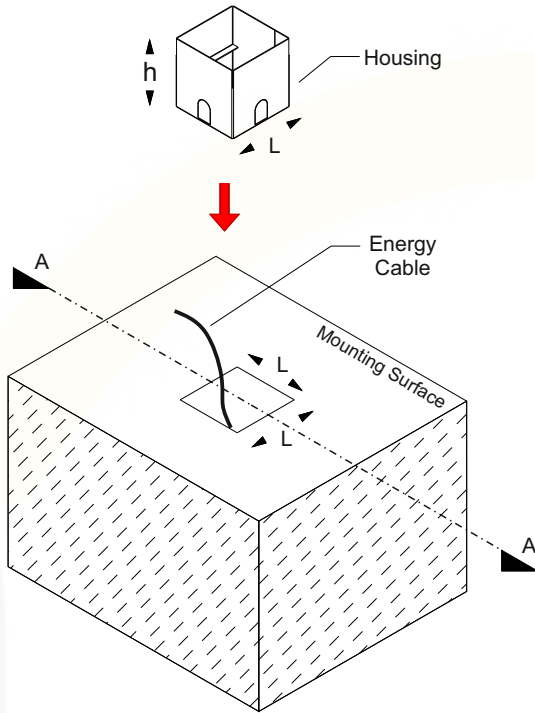
### **RECOMMENDATIONS FOR THE USER:**

- 1) Before the installation, make sure that there is no voltage.
- 2) Do not touch the fitting when it is working on / switched on
- 3) Do not look at the fitting directly or from a short distance.
- 4) Disconnect / switch off the fitting before changing the lamps

### **NOTES:**

- Technical amendments are reserved.
- CE – Conformity mark
- The manufacturer is then discharged from liability when damage is caused by improper use or installation.
- Clean luminaire regularly with solvent-free cleansers from dirt and deposits. Do not use high pressure cleaners.
- The highest declared high temperature of the luminaire is 70°C.
- Minimum static load that the luminaire must withstand 90MN/kg.

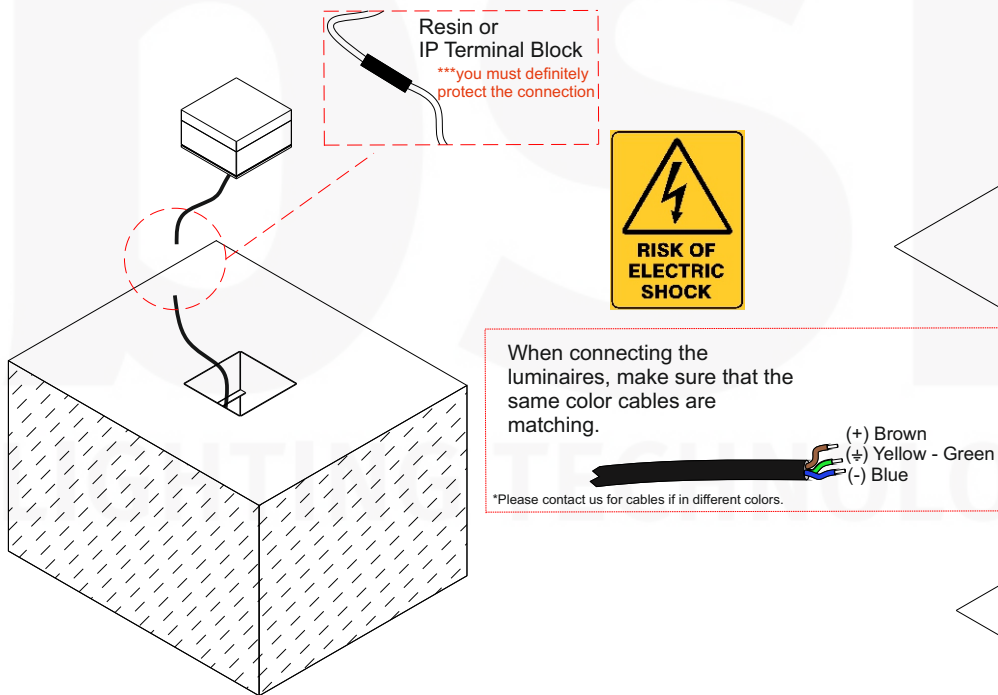
- 1) - Mounting hole is opens.  
- Complete the drainage and place the housing.



\*\*\* Mounting hole should be drained.

- 2) Electrical connection is done.

- 3) The luminaire is placed on the housing.



### **Considerations**

- Do not cut-off or damage the cables of the products supplied as sockets. Otherwise, water may enter to the luminaire through cable and damage the electronic parts inside.
- If you make the electrical connection, except for IP.68 Terminal Block - IP.68 Plug connector - IP.68 socket; the connections must be under IP protection. Otherwise, water may enter to the luminaire through cable and damage the electronic parts inside.
- The IP68 Connecting kits must be assembled in accordance with the installation instructions. Otherwise, water may enter to the luminaire through cable and damage the electronic parts inside.
- Mounting hole should be drained.
- If the external flexible cable or cable of this fixture is damaged, it must be replaced exclusively by the manufacturer or its service representative or a similarly qualified person to avoid any hazard.
- The light source of this luminaire cannot be changed. When the light source reaches the end of its life, the entire luminaire will be replaced.

### **Out of Warranty Situations**

- Product last output cable is not protected IP67-IP68.
- Faulty electrical connection.
- Wrong IP68 socket-terminal block- plug connector connection.  
(Wrong opening of the cable length, faulty tightening the screws etc.)
- If the IP68 Connecting kits are under water.
- No drainage in the mounting hole.