

Wall Washers Surface

Defining architectural spaces with precision optics. Architectural LED Washer range inspires architects, designers and system integrators with its exceptional quality, a variety of beam angles and remarkable creativity.

Compact and High Performance

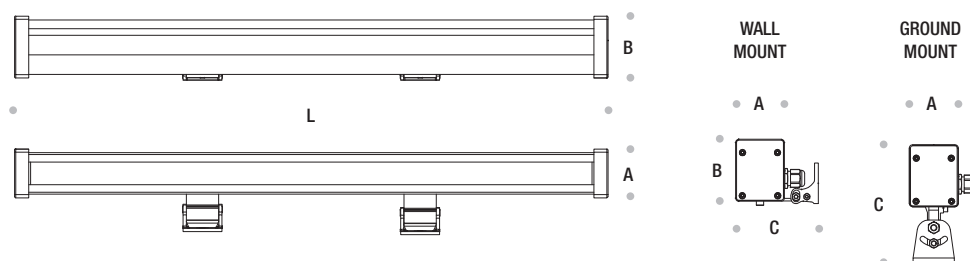
High performance and compact linear wall washing and wall grazing luminaires with impressive versatility.

Innovative light sources and precise optical systems combine to form a high impact and low maintenance lighting system. Striking dynamic lighting scenarios can be controlled via the DMX-RDM protocol.

Integrated Solution and Easy to Install

Plug and play built-in system with the fully integrated universal power supply unit.

The watertight plug connector ensures easy, fast and secure installation. The robust luminaire fits seamlessly into the architecture.



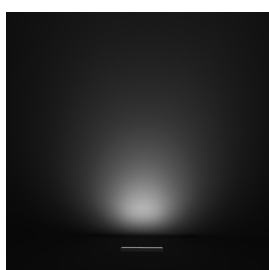
BS Linus DA					
Codes	Power	A (mm)	B (mm)	C (mm)	L (mm)
AR9344501 MONO	22W	45	58	77 - 109	600
AR9344502 MONO	31W	45	58	77 - 109	900
AR9344503 MONO	47W	45	58	77 - 109	1200
AR9344601 RGB	35W	45	58	77 - 109	600
AR9344602 RGB	50W	45	58	77 - 109	900
AR9344603 RGB	70W	45	58	77 - 109	1200
AR9344701 TUNABLE	22W	45	58	77 - 109	600
AR9344702 TUNABLE	31W	45	58	77 - 109	900
AR9344703 TUNABLE	47W	45	58	77 - 109	1200



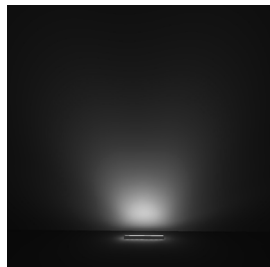
For detailed information about the BS Linus DA



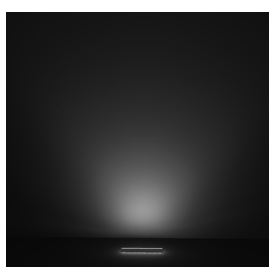
18 degree



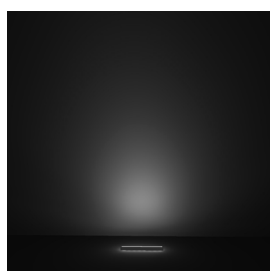
60x110 degree



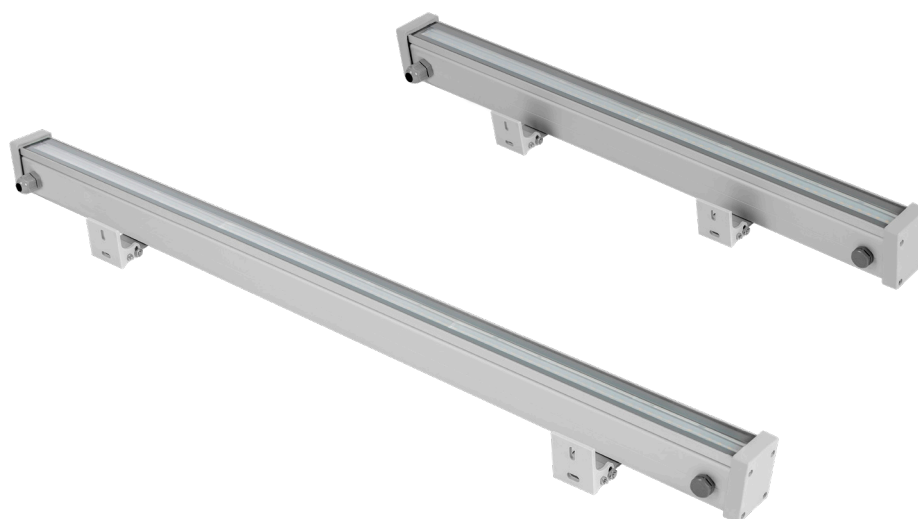
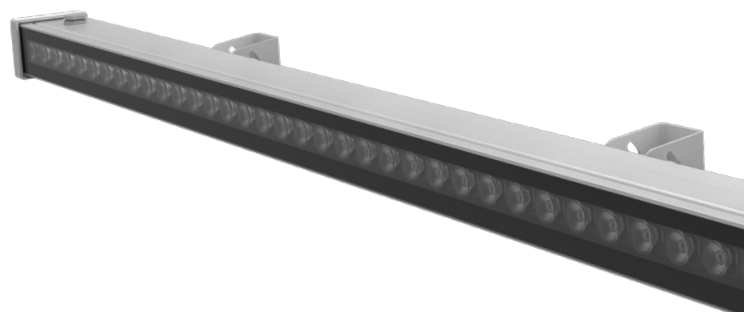
25 degree



90x110 degree



30x90 degree



Technical Features

Corrosion resistant extruded anodized aluminium housing (EN AW-6060) with stainless steel screws (A4 grade) and silicone rubber gaskets. End-to-end connection via power connectors. Includes adjustable mounting brackets. Power unit is built in.

LED MacAdam Step 3

Nominal Voltage 198-264 V AC, 50/60Hz

Operating Temperature -40°C / +55°C

Control Systems 1-10V DIM, DMX / RDM, DALI Interface, RGB DMX 512

Protection Class IP66

Impact Resistance IK09

Insulation Class I

Complies with EN60598-1 and relevant standards.