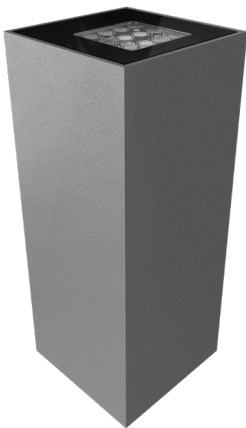
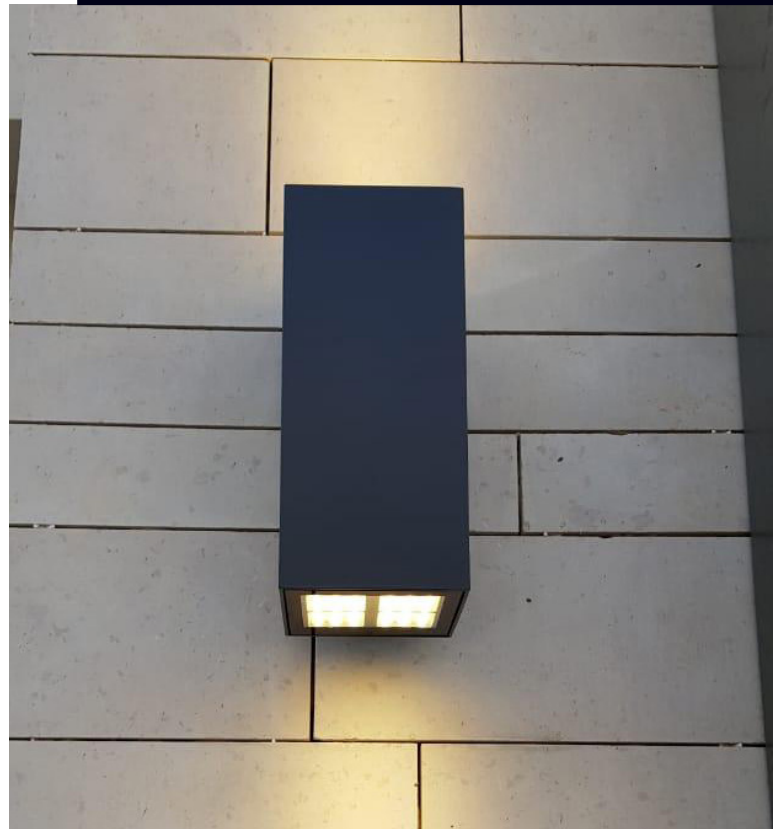


# iTetta



Square shaped - up and down - luminaire combines brilliant LED light with straightforward design. Oppositely arranged, the two LED sources generate an up-and downwardly directed, various light beams. Manufactured in different sizes.

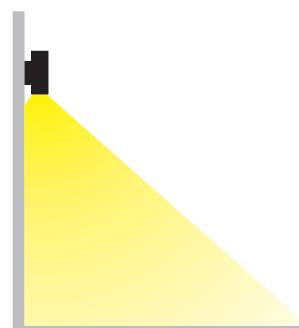
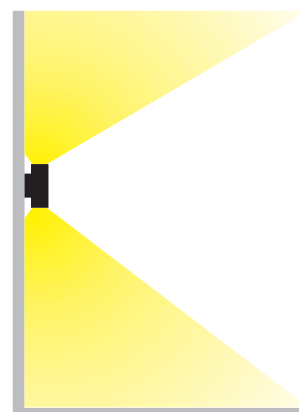
Designed to last in extremely harsh environments.





CODE	POWER CONSUMPTION	LUMEN OUTPUT (lm) 3000K / 4000K	COLOUR TEMPERATURE	A (mm)	H (mm)
WA4112	1X6W	810 / 852	3000K / 4000K	100	115
WA4114	1X9W	1215 / 1278	3000K / 4000K	100	115
WA4116	1X14W	1890 / 1988	3000K / 4000K	100	115
WA4118	1X24W	3240 / 3408	3000K / 4000K	150	165
WA4120	1X39W	5265 / 5538	3000K / 4000K	150	165
WA4122	1X54W	7290 / 7668	3000K / 4000K	150	165
WA4124	2X6W	1620 / 1704	3000K / 4000K	100	200
WA4126	2X9W	2430 / 2556	3000K / 4000K	100	200
WA4128	2X14W	3780 / 3976	3000K / 4000K	100	200
WA4130	2X24W	6480 / 6816	3000K / 4000K	150	300
WA4132	2X39W	10530 / 11076	3000K / 4000K	150	300
WA4134	2X54W	14580 / 15336	3000K / 4000K	150	300

<b>LED Type</b>	High efficiency LEDs, available in 2700K, 3000K, 4000K, 5000K, 6500K CCT tolerance within a 3-step MacAdams ellipse and LM80 compliant.
<b>Nominal Voltage</b>	220V-240V AC, 50/60Hz
<b>Color Rendering Index</b>	CRI> 80 standard and CRI>90 on request.
<b>Optics</b>	One and two sided 8° / 12° / 30° / 45° / 60° / 90° and asymmetrical beam.
<b>Materials</b>	Corrosion resistant double layer polyester powder coated paint finish aluminium housing (EN AW-6060) with stainless steel screws (A4 grade) and silicone gaskets. Power unit is built in. Available in anthracite gray as a standard finish or any desired RAL colour.
<b>Optional Coating</b>	Marine grade.
<b>Diffuser</b>	Thermal-shock resistant tempered glass.
<b>LED Specification</b>	L90B50 > 100000 hours life time.
<b>Energy Efficiency Class (EEC)</b>	A++
<b>Operating Temperature</b>	-40°C / +55°C
<b>Power Factor</b>	>0.95
<b>Protection Class</b>	IP66
<b>Impact Resistance</b>	IK10
<b>Insulation Class</b>	Class I
<b>Conformity</b>	Complies with European Standards EN 60598 and CE certified.



TOP VIEW

