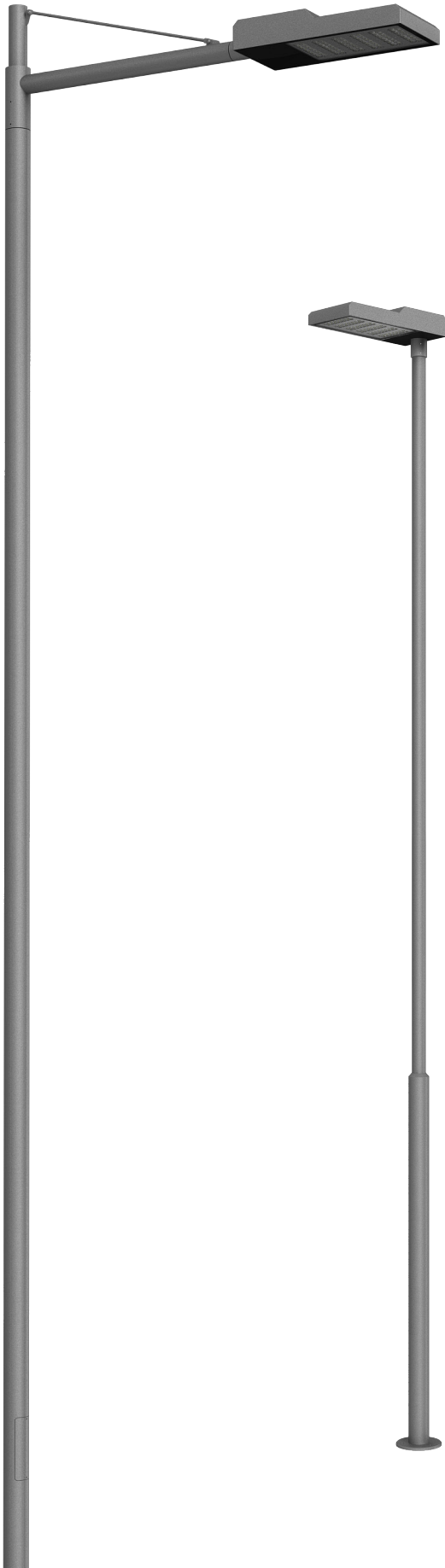


## iFlat Deco

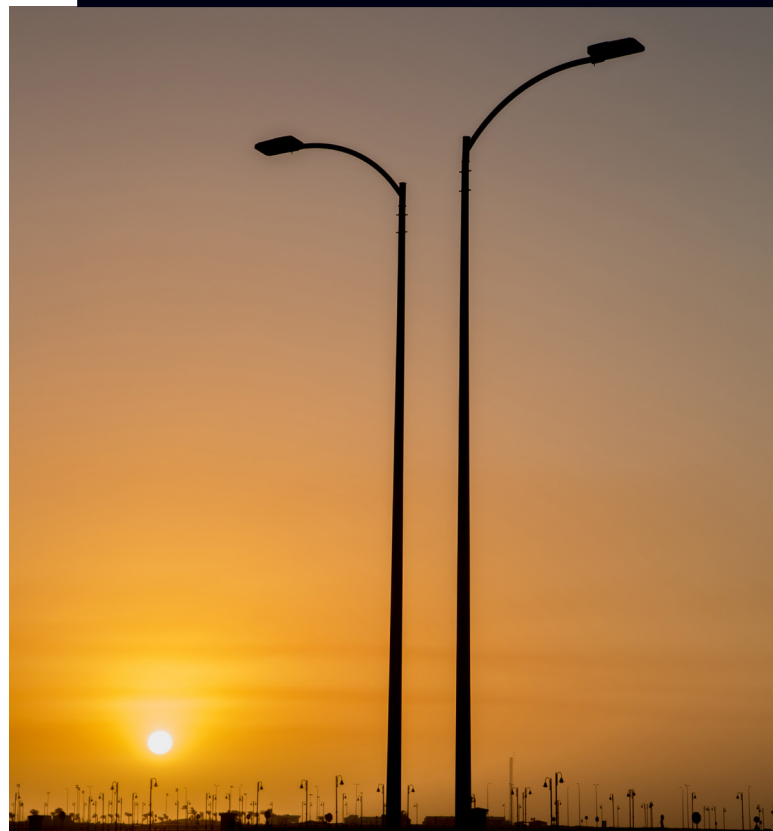


iFlat Deco is a future-oriented, robust luminaire for road lighting applications with optimum heat dissipation, automatic disconnection for safe access, easy installation and high protection against aggressive marine surroundings.

Highly efficient LED technology up to 164lm/W with uniform and glare-free illumination.

Incorporating a unique and modular BSISQ® LED Module; the luminaire achieves the required illumination levels and distribution in roadway, motorway, parking lots, pedestrian and urban environments.

Designed to last in extremely harsh environments.





CODE	POWER CONSUMPTION	LUMEN OUTPUT (lm) 3000K / 4000K	COLOUR TEMPERATURE	A (mm)	B (mm)	C (mm)	H (mm)	F (mm)
UA72861	74W	9990 / 10508	3000K / 4000K	330	583	114	3000 / 5000	250
UA72862	112W	15120 / 15904	3000K / 4000K	330	583	114	3000 / 5000	250
UA72863	148W	19980 / 21016	3000K / 4000K	330	663	114	6000 / 8000	300
UA72864	186W	25110 / 26412	3000K / 4000K	330	663	114	6000 / 8000	300
UA72865	222W	29970 / 31524	3000K / 4000K	330	793	114	9000 / 12000	400
UA72866	260W	35100 / 36920	3000K / 4000K	330	793	114	9000 / 12000	400

\*Poles to be ordered separately. See tables on pages 386-391

<b>LED Type</b>	High efficiency LEDs, available in 2700K, 3000K, 4000K, 5000K, 6500K CCT tolerance within a 3-step MacAdams ellipse and LM80 compliant.
<b>Nominal Voltage</b>	220V-240V AC, 50/60Hz
<b>Color Rendering Index</b>	CRI> 80 and CRI>90 on request.
<b>Optics</b>	Street optics.
<b>Materials</b>	Corrosion resistant double layer polyester powder coated paint finish die cast aluminium housing with stainless steel screws (A4 grade) and silicone gaskets. Power unit is built in. Available in anthracite gray as a standard finish or any desired RAL colour. Adjustable joint for beam direction 0° - 30°. BSISQ® LED Module.
<b>Optional Coating</b>	Marine grade.
<b>Accessories</b>	Terminal block.
<b>Diffuser</b>	Thermal-shock resistant tempered glass.
<b>LED Specification</b>	L90B50 > 100000 hours life time.
<b>Energy Efficiency Class (EEC)</b>	A++
<b>Operating Temperature</b>	-40°C / +55°C
<b>Control Systems</b>	DALI Interface.
<b>Protection Class</b>	IP.66
<b>Impact Resistance</b>	IK 08
<b>Insulation Class</b>	Class I
<b>Conformity</b>	Complies with European Standards EN 60598 and CE certified.

