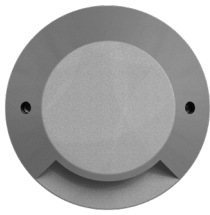


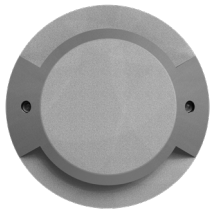
iServo

Ground recessed round LED luminaire for installation outdoor for walk over and drive over with high mechanical strength. Ideal to illuminate walking paths, squares or driveways.

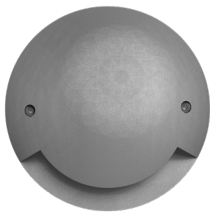
Designed to last in extremely harsh environments.



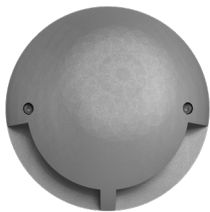
AC8032



AC8034



AC8036



AC8038





CODE	POWER CONSUMPTION	LUMEN OUTPUT (lm) 3000K / 4000K	COLOUR TEMPERATURE	A (mm)	B (mm)	C (mm)
AC8032 SINGLE SIDED	3W	225 / 255	3000K / 4000K	157	34	110
AC8034 DOUBLE SIDED	6W	450 / 510	3000K / 4000K	157	34	110
AC8036 SINGLE SIDED	3W	225 / 255	3000K / 4000K	160	45	110
AC8038 DOUBLE SIDED	6W	450 / 510	3000K / 4000K	160	45	110

LED Type	High efficiency LEDs, available in 2700K, 3000K, 4000K, 5000K, 6500K CCT tolerance within a 3-step MacAdams ellipse and LM80 compliant.
Nominal Voltage	220V-240V AC, 50/60Hz
Color Rendering Index	CRI> 80 standard and CRI>90 on request.
Optics	One Sided - Two Sided
Materials	Corrosion resistant double layer polyester powder coated paint finish die cast aluminium housing with stainless steel screws (A4 grade) and silicone gaskets. Power unit is built in. Available in anthracite gray as a standard finish or any desired RAL colour. Includes recessing box.
Optional Coating	Marine grade.
Diffuser	High impact and heat resistant polycarbonate with UV protection.
LED Specification	L90B50 > 100000 hours life time.
Energy Efficiency Class (EEC)	A++
Operating Temperature	-40°C / +55°C
Power Factor	>0.95
Protection Class	IP67
Impact Resistance	IK10
Load Rating	40 kN
Insulation Class	Class I
Installation	Recessing box to be placed at ground level 20 cm drainage gravel for water evacuation. Connection via junction boxes.
Conformity	Complies with European Standards EN 60598 and CE certified.

