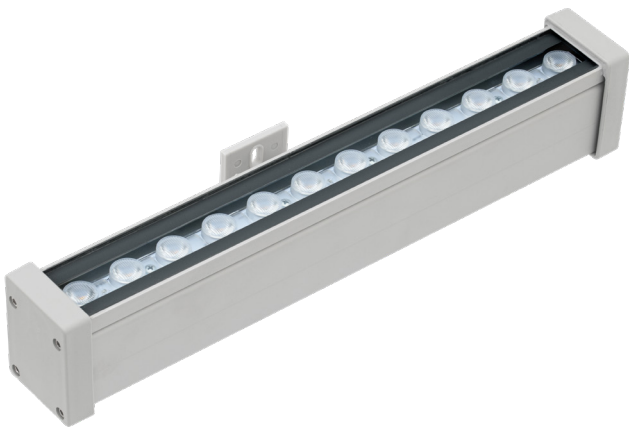


## BS Linus VA

iLinus VA is a high-performance linear luminaire suitable for a wide range of wall washing, accent, surface grazing, and indirect lighting applications in architectural, hospitality, and retail environments. It has multiple customization options to illuminate interior walls, exterior facades, and unique architectural details.

Monochrome, RGB, Tunable White or DALI controllable, easy to install with the built-in universal power supply and connect via combined power and data connectors.

Designed to last in extremely harsh environments.





CODE	LENGTH (mm)	LED QTY	POWER CONSUMPTION	LUMEN OUTPUT (lm) 3000K / 4000K
AR9466201 MONO	320	12	12W	1621 / 1706
AR9466202 MONO	610	24	24W	3242 / 3412
AR9466203 MONO	910	36	36W	4863 / 5117
AR9466204 MONO	1200	48	48W	6484 / 6824
CODE	LENGTH (mm)	LED QTY	POWER CONSUMPTION	LUMEN OUTPUT (lm) RGB
AR9466301 RGB	610	24	28W	1506
AR9466302 RGB	910	36	38W	2172
AR9466303 RGB	1200	48	54W	3117
CODE	LENGTH (mm)	LED QTY	POWER CONSUMPTION	LUMEN OUTPUT (lm) 2700K- 6500K
AR9466401 TUNABLE	600	24	14W	2041
AR9466402 TUNABLE	900	36	21W	3062
AR9466403 TUNABLE	1200	48	28W	4082

<b>LED Type</b>	High efficiency LEDs, Monochrome, RGB or Tunable White available in 2700K, 3000K, 4000K, 5000K, 6500K CCT tolerance within a 3-step MacAdams ellipse and LM80 compliant.
<b>Nominal Voltage</b>	198-264 V AC, 50/60Hz.
<b>Optional Voltage</b>	24V DC / PS (Constant Voltage)
<b>Color Rendering Index</b>	CRI> 80 standard and CRI>90 on request.
<b>Optics</b>	Standard: 17°/ 25°/ 35°/ 20°x45° Custom optics upon request.
<b>Dimensions (mm) Wall Mount</b>	A:45 B:58 C:77
<b>Dimensions (mm) Ground Mount</b>	A:45 B:58 C:109
<b>Materials</b>	Corrosion resistant extruded anodized aluminium housing (EN AW-6060) with stainless steel screws (A4 grade) and silicone rubber gaskets. End to end connection via power connectors. Includes wall or ground mounting brackets. Power unit is built in.
<b>Accessories</b>	Wall mounting bracket. Ground mounting bracket.
<b>Diffuser</b>	Thermal-shock resistant 5mm tempered glass.
<b>LED Specification</b>	L90B50 > 100000 hours life time.
<b>Energy Efficiency Class (EEC)</b>	A++
<b>Operating Temperature</b>	-40°C / +55°C
<b>Power Factor</b>	>0.95
<b>Control Systems</b>	1-10V DIM. DALI Interface, RGB DMX 512.
<b>Protection Class</b>	IP66
<b>Impact Resistance</b>	IK09
<b>Insulation Class</b>	Class I
<b>Conformity</b>	Complies with European Standards EN 60598 and CE certified.

