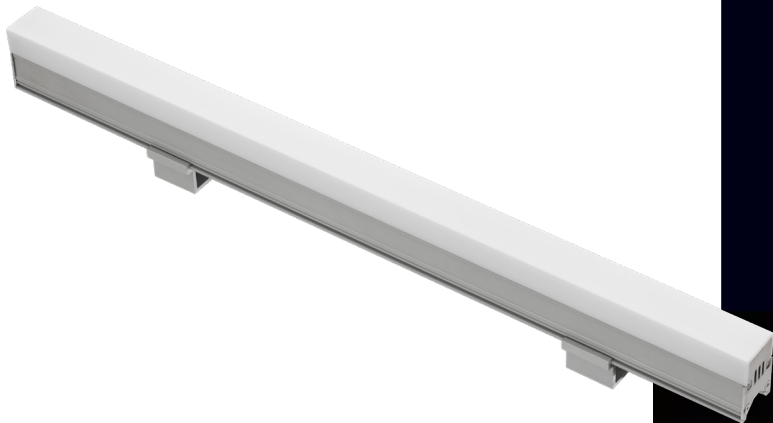


BS Line

BS Line is an innovative linear LED luminaire for individual architectural requirements. The fixture is IP rated, silicone sealed aluminium profile with mounting brackets. Available in lengths to suit your application and provides a concealed, continuous linear illumination for discrete architectural details. LED options and accessories offer an advanced solution for media facade applications in architectural buildings, hospitality, stadiums and bridges.

Designed to last in extremely harsh environments.





CODE	LENGTH (mm)	LED QTY	POWER CONSUMPTION	LUMEN OUTPUT (lm) 3000K / 4000K	COLOUR TEMPERATURE
AR9658101 MONO	500	24	7W	525 / 595	3000K / 4000K
AR9658102 MONO	1000	48	14W	1050 / 1190	3000K / 4000K
AR9658103 MONO	1500	72	21W	1575 / 1785	3000K / 4000K
AR9658104 MONO	2000	96	28W	2100 / 2380	3000K / 4000K
CODE	LENGTH (mm)	LED QTY	POWER CONSUMPTION	L (mm)	COLOUR TEMPERATURE
AR9659101 RGB	500	24	7W	350	RGB
AR9659102 RGB	1000	48	14W	700	RGB
AR9659103 RGB	1500	72	21W	1050	RGB
AR9659104 RGB	2000	96	28W	1400	RGB

LED Type	High efficiency LEDs, RGB, Monochrome available in 2700K, 3000K, 4000K, 5000K, 6500K CCT tolerance within a 3-step MacAdams ellipse and LM80 compliant.
Nominal Voltage	24V DC
Color Rendering Index	CRI > 80
Optics	Diffused beam 180°
Dimensions (mm)	A:28 B:65
Materials	Corrosion resistant extruded anodized aluminium housing (EN AW-6060) with stainless steel screws (A4 grade) and epoxy resin. Operates with a remote driver. Includes waterproof connectors and mounting bracket.
Accessories	Standard mounting bracket.
Diffuser	Shockproof PMMA UV Stabilised Diffuser.
LED Specification	L90B50 > 100000 hours life time.
Energy Efficiency Class (EEC)	A++
Operating Temperature	-40°C / +55°C
Power Factor	>0.95
Control Systems	1-10V DIM, DALI Interface. RGB DMX512 - Artnet
Protection Class	IP67
Impact Resistance	IK09
Insulation Class	Class I
Conformity	Complies with European Standards EN 60598 and CE certified.

