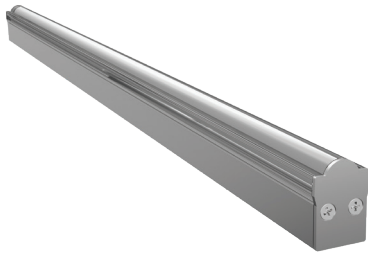


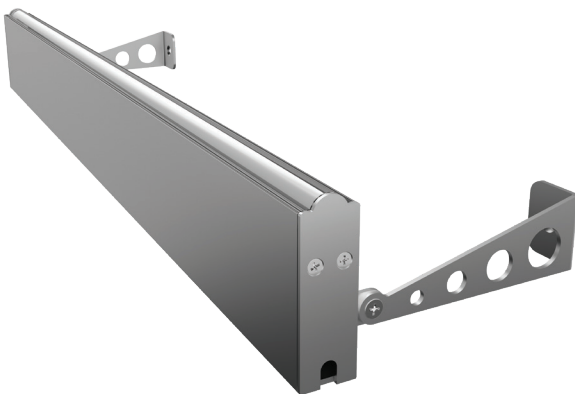
# iRinga

iRinga is a dimmable encapsulated linear LED line, suited for installation in indoor and outdoor with a broad range of colours. It is a colour mixing linear light source in a compact, IP rated, silicone sealed aluminium profile with mounting brackets. Available in lengths and different beam angles to suit your application and provides a concealed, continuous linear narrow, medium or wide beam illumination for discrete architectural details and accent lines. Designed to last in extremely harsh environments.

Monochrome, RGB, DMX or DALI controllable, easy to install with the remote universal power supply and connect via combined low-power and data connectors.



AR4402



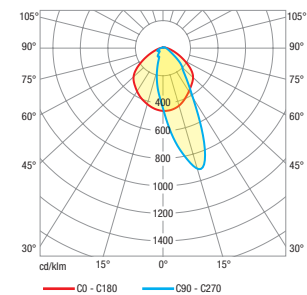
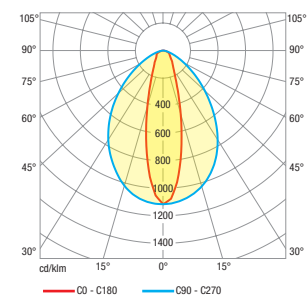
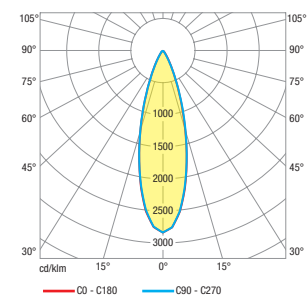
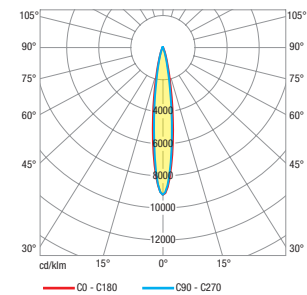
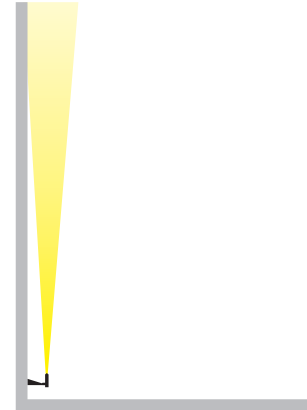
AR4404



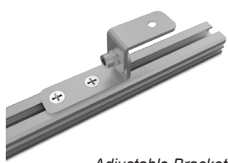


CODE	POWER CONSUMPTION	LUMEN OUTPUT (lm) 3000K / 4000K	COLOUR TEMPERATURE	A (mm)	B (mm)	L (mm)
AR4402	12W	900 / 1020	3000K / 4000K	21	30	1000
AR4404	12W	900 / 1020	3000K / 4000K	21	65	1000
AR4402	18W	1350 / 1530	3000K / 4000K	21	30	1000
AR4404	18W	1350 / 1530	3000K / 4000K	21	65	1000

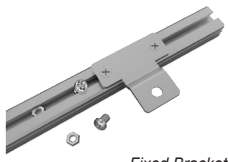
<b>LED Type</b>	High efficiency LEDs, available in 2700K, 3000K, 4000K, 5000K, 6500K CCT tolerance within a 3-step MacAdams ellipse and LM80 compliant.
<b>Nominal Voltage</b>	24 V DC
<b>Color Rendering Index</b>	CRI> 80 standard and CRI>90 on request.
<b>Optics</b>	10° / 30° / 60° / 120° and Asymmetrical beam.
<b>Materials</b>	Corrosion resistant extruded anodized aluminium housing (EN AW-6060) with stainless steel screws (A4 grade) and silicone rubber gaskets. Operates with a remote driver. Includes waterproof connectors and mounting bracket. BSILINEA® LED Module.
<b>Optional Coating</b>	Marine grade.
<b>Accessories</b>	Adjustable Bracket, Fixed Bracket, Adjustable Long Bracket, End-Cap.
<b>Diffuser</b>	Shockproof PMMA UV Stabilised Diffuser.
<b>LED Specification</b>	L90B50 > 100000 hours life time.
<b>Energy Efficiency Class (EEC)</b>	A++
<b>Operating Temperature</b>	-40°C / +55°C
<b>Power Factor</b>	>0.95
<b>Control Systems</b>	RGB DMX512, 1-10V DIM, DALI Interface (External).
<b>Protection Class</b>	IP67
<b>Impact Resistance</b>	IK08
<b>Insulation Class</b>	Class III
<b>Conformity</b>	Complies with European Standards EN 60598 and CE certified.



End-Cap



Adjustable Bracket



Fixed Bracket



Long Bracket

