

In-Ground

iMetos is ideal for lighting effects in private and residential areas. The entire product range is characterized by innovative mounting techniques and design solutions that guarantee very low temperatures on the external surface of the luminaire.

Architectural in-ground die-cast aluminium LED range inspires architects, designers and system integrators with its exceptional quality, beams and remarkable creativity.

High Impact and Versatile

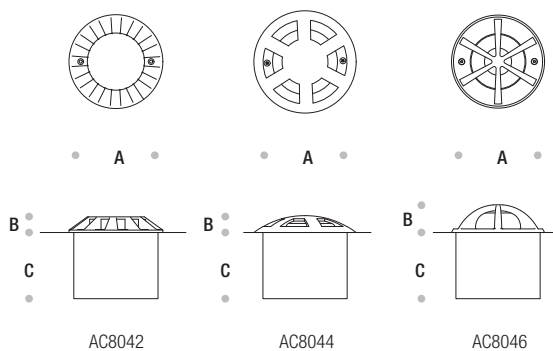
Innovative light sources with low recessing depth combine to form a high impact and low maintenance product.

iMetos is a compact and high performance luminaire with impressive versatility. Suitable for easy installation on walkways, promenades and squares.

Integrated Solution and Easy to Install

Plug and play built-in system with the fully integrated universal power supply unit.

The watertight plug connector ensures easy, fast and secure installation. The robust luminaire fits seamlessly into the architecture.



iMetos					
Codes	Power	Colour Temperature	A (mm)	B (mm)	C (mm)
AC8042	6W	3000K / 4000K	156	26	110
AC8044	6W	3000K / 4000K	170	28	110
AC8046	6W	3000K / 4000K	155	46	110

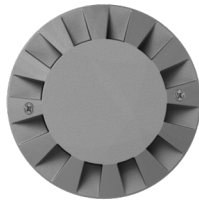
iMetos
iMetos



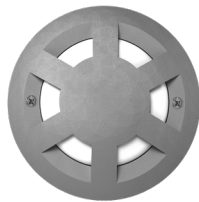
For detailed information about the iMetos



Rotational light distribution



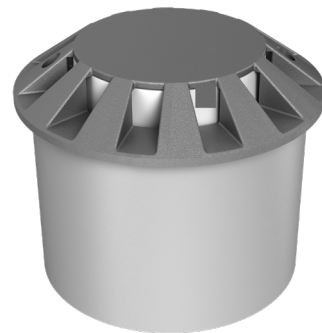
AC8042



AC8044



AC8046



Technical Features

Corrosion resistant double layer polyester powder coated paint finish die cast aluminium housing with stainless steel screws (A4 grade) and silicone gaskets. Power unit is built in. Available in anthracite gray as a standard finish or any desired RAL colour. Includes recessing box.

LED MacAdam Step 3

Nominal Voltage 220V-240V AC, 50/60Hz

Operating Temperature -40°C / +55°C

Control Systems On - Off

Protection Class IP67

Impact Resistance IK10

Insulation Class I

Complies with EN60598 and relevant standards.