

Wall Washers Surface



Defining architectural spaces with precision optics. Architectural LED Washer range inspires architects, designers and system integrators with its exceptional quality, a variety of beam angles and remarkable creativity.

High Performance and Innovative

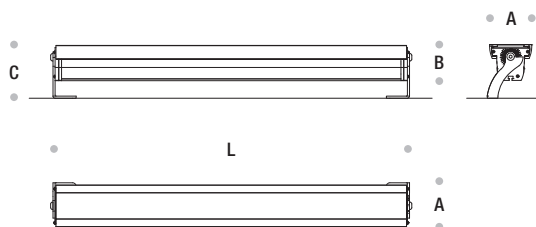
High performance and compact linear wall washing and wall grazing luminaires with impressive versatility. Graze intelligent white luminaires offer channels of cool, neutral, and warm white LEDs that enable color temperatures from 2200K to 6500K.

Innovative light sources and precise optical systems combine to form a high impact and low maintenance lighting system. Striking dynamic lighting scenarios can be controlled via the DMX-RDM protocol.

Integrated Solution and Easy to Install

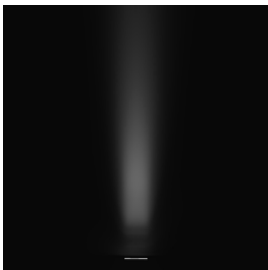
Plug and play built-in system with the fully integrated universal power supply unit.

The watertight plug connector ensures easy, fast and secure installation. The robust luminaire fits seamlessly into the architecture.

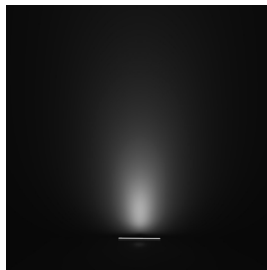


iAxis Dynamic Surface					
Codes	Power	A (mm)	B (mm)	C (mm)	L (mm)
AR9156331	18W	59	50	75 - 90	635
AR9156332	27W	59	50	75 - 90	935
AR9156333	36W	59	50	75 - 90	1235
AR9156334	45W	59	50	75 - 90	1535
AR9156401	16W	59	50	75 - 90	675
AR9156411	24W	59	50	75 - 90	1035
AR9156412	36W	59	50	75 - 90	1535

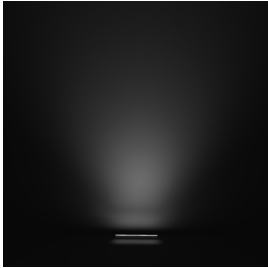




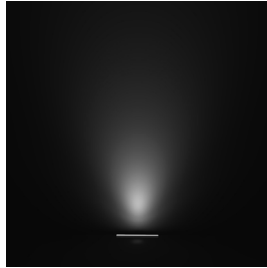
8 degree



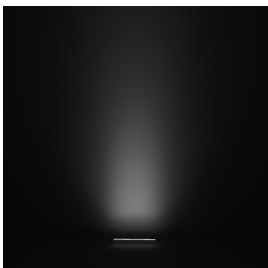
30 degree



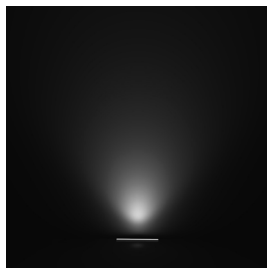
10x60 degree



45 degree



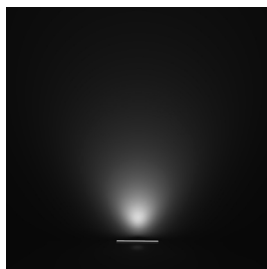
12 degree



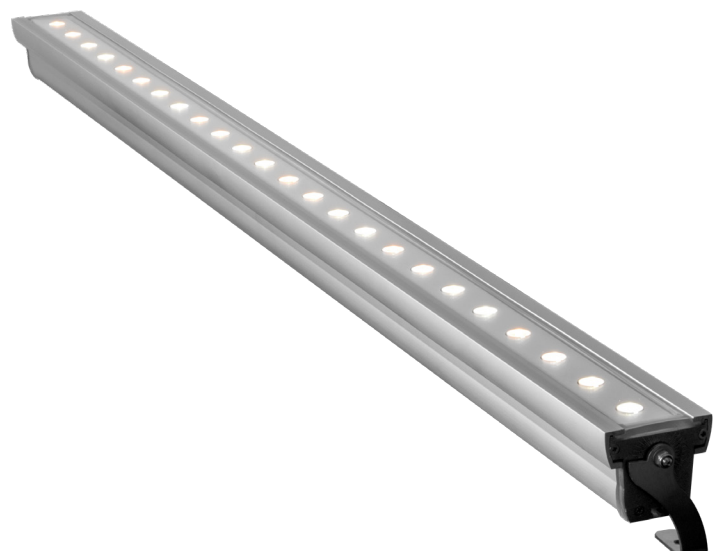
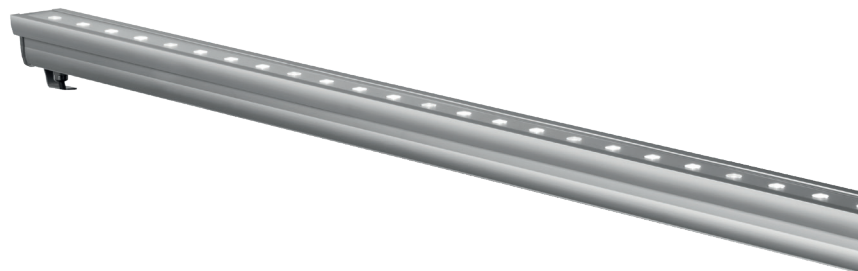
60 degree



18x38 degree



90 degree



Technical Features

Corrosion resistant extruded anodized aluminium housing (EN AW-6060) with stainless steel screws (A4 grade) and silicone rubber gaskets. End to-end connection via power connectors. Includes adjustable mounting brackets. Power unit is built in.

LED MacAdam Step 3

Nominal Voltage 220V-240V AC, 50/60Hz

Operating Temperature -40°C / +55°C

Control Systems DMX / RDM, DALI Interface

Protection Class IP67

Impact Resistance IK10

Insulation Class I

Complies with EN60598-1 and relevant standards.