



Key Features

iFluance series offer plug&play modular and adaptable linear illumination solutions. All components are perfectly matched, both optically and mechanically to achieve a wide variety of combinations.

The line is available with a unique asymmetric beam, double asymmetric beam, oval beam, wide beam distribution, providing exceptional uniformity and brightness for facades.

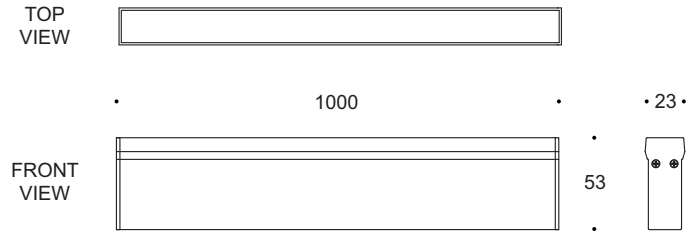
Designed to last in extremely harsh environments.



Key Data

| | |
|------------------------------|---|
| LED Type | High efficiency LEDs, available in 2700K, 3000K, 4000K, 5000K, 6500K CCT tolerance within a 3-step MacAdams ellipse and LM80 compliant. |
| Nominal Voltage | 24V DC |
| Color Rendering Index | CRI ≥ 80 standard and CRI ≥ 90 on request. |
| Optics | 30° / 90° / Asymmetric beam / Double asymmetric beam. |
| Materials | Corrosion resistant extruded anodized aluminium housing (EN AW-6060) with stainless steel screws (A4 grade) and silicone rubber gaskets. Operates with a remote driver. Includes waterproof connectors. BSILINEA® LED Module. |
| Optional Coating | Marine grade. |
| Diffuser | Shockproof PMMA UV Stabilised Diffuser. |
| LED Life Time | L80 B10 70.000h Ta 25°C L80 B10 50.000h Ta 40°C |
| Operating Temperature | -40°C / +55°C |
| Power Factor | >0.95 |
| Control Systems | 1-10V DIM, DMX / RDM, DALI Interface. |
| Protection Class | IP67 |
| Impact Resistance | IK08 |
| Insulation Class | Class III |
| Conformity | Complies with European Standards EN 60598 and CE certified. |

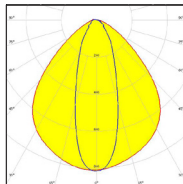
Technical Drawing



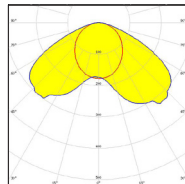
Information

| CODE | LENGTH (mm) | POWER CONSUMPTION | LUMEN OUTPUT (lm) 3000K / 4000K | COLOUR TEMPERATURE |
|--------|-------------|-------------------|---------------------------------|--------------------|
| AR4486 | 1000 | 18W | 1350 / 1530 | 3000K / 4000K |

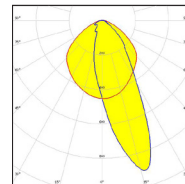
Light Distribution Curve



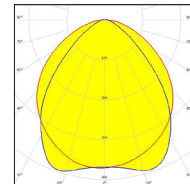
30° x 95°



Asymmetric

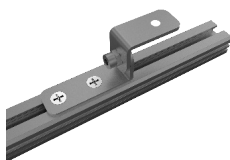


Asymmetric

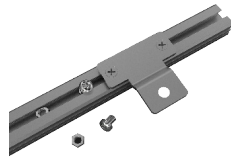


90° x 110°

Accessories



Adjustable Bracket
Code: AB6001



Fixed Bracket
Code: FB7001



Long Bracket
Code: FN8001



Transparent Connector
Code: TC1203



End Cap
Code: EC1001