



Key Features

iFluance series offer plug&play modular and adaptable linear illumination solutions. All components are perfectly matched, both optically and mechanically to achieve a wide variety of combinations.

The line is available with a unique asymmetric beam, double asymmetric beam, oval beam, wide beam distribution, providing exceptional uniformity and brightness for facades.

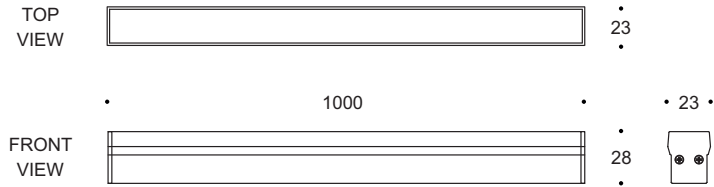
Designed to last in extremely harsh environments.



Key Data

LED Type	High efficiency LEDs, available in 2700K, 3000K, 4000K, 5000K, 6500K CCT tolerance within a 3-step MacAdams ellipse and LM80 compliant.
Nominal Voltage	24V DC
Color Rendering Index	CRI ≥ 80 standard and CRI ≥ 90 on request.
Optics	30° / 90° / Asymmetric beam / Double asymmetric beam.
Materials	Corrosion resistant extruded anodized aluminium housing (EN AW-6060) with stainless steel screws (A4 grade) and silicone rubber gaskets. Operates with a remote driver. Includes waterproof connectors. BSILINEA® LED Module.
Optional Coating	Marine grade.
Diffuser	Shockproof PMMA UV Stabilised Diffuser.
LED Life Time	L80 B10 70.000h Ta 25°C L80 B10 50.000h Ta 40°C
Operating Temperature	-40°C / +55°C
Power Factor	>0.95
Control Systems	1-10V DIM, DMX / RDM, DALI Interface.
Protection Class	IP67
Impact Resistance	IK08
Insulation Class	Class III
Conformity	Complies with European Standards EN 60598 and CE certified.

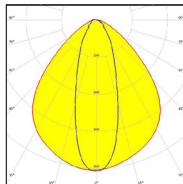
Technical Drawing



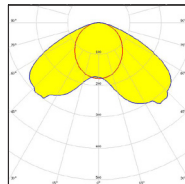
Information

CODE	LENGTH (mm)	POWER CONSUMPTION	LUMEN OUTPUT (lm) 3000K / 4000K	COLOUR TEMPERATURE
AR4484	1000	18W	1350 / 1530	3000K / 4000K

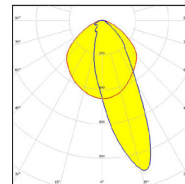
Light Distribution Curve



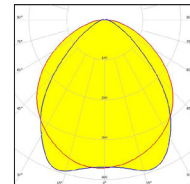
30° x 95°



Asymmetric

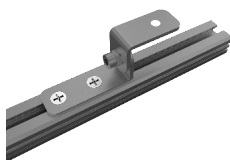


Asymmetric

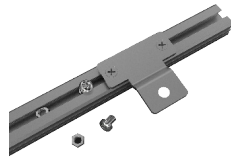


90° x 110°

Accessories



Adjustable Bracket
Code: AB6001



Fixed Bracket
Code: FB7001



Long Bracket
Code: FN8001



Transparent Connector
Code: TC1203



End Cap
Code: EC1001